

DVESScapades

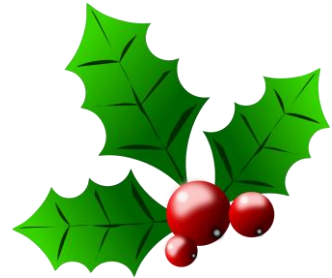
escapades: interesting, stimulating, exciting activities and adventures



DELAWARE VALLEY EARTH SCIENCE SOCIETY NEWSLETTER



December 2022



Next Meeting: Wednesday, December 14th, in person
7:00 pm Holiday Party and Election of officers

January's meeting on Wednesday, the 11th, will be a Zoom meeting again. Our guest speaker will be Dr. Aaron Michael Barth from Rowan University who will talk about the glacial history of the Adirondack Mountains.

Meeting location this month: Education Bldg. behind Centenary United Methodist Church, South White Horse Pike, Berlin NJ 08009

President's Message

Merry Christmas, Happy Hanukkah, Happy Kwanza and Happy New Year to you and your families. Be safe and enjoy time with family and friends. We will be meeting in person indoors for the first time since last year's Christmas Party. We have seen a few of our bright and cheery faces on Zoom, field trips and annual picnic. We are getting ready for face-to-face meetings again. During the winter months when there is a better chance for inclement weather, we will still be Zooming. When we start face to face meeting on a regular basis we will also continue Zooming. This hybrid type of meeting is all new to us so give us some room for mistakes. We will continue taking trips as weather permits. We are making plans for our upcoming field trips now. Please contact me should you have any ideas of localities or specimen types (fossil or minerals) you would like to visit. Remember we are approaching museum trip season. In January we have the Rutgers's Geology Museum Open House on January 28th. Plus, we definitely plan on taking Ralph Johnson up on his invitation to see his Upper Cretaceous Fossils of NJ at his Monmouth Amateur Paleontology Society (MAPS) museum.

Dues: Annual club **dues are due** for 2023. The base fee is \$20.00 while each additional member from a family still remains at \$5.00. Senior citizens are only \$10.00 for the year.

December 14th, 2022: Regular Meeting-Holiday Party: Holiday Party and gift exchange. The gift should cost no more than \$15.00; if you give a gift, you get a gift. Everyone is to bring a desert or side dish to share with others. The club will provide a variety of food, similar to last year, as well as drinks (coffee, tea, soda and water). Please sign up by "replying all" to the official club announcement, to let everyone know how many are coming and what you are bringing. Feel free to bring in a few mineral specimens to identify, give away or trade or we can have an open discussion on possible field trip ideas. I hope to see everyone there. Please don't forget to sign up.

Finally, we will be holding the election of officers for 2023. There will be plenty of opportunities to help out at club functions, be a chairperson of a committee or lead a field trip.

Proposed Slate of Officers for December's Election: Other nominations will be taken on the floor during the first ½ hour of the December meeting. Then the slate of officers will then be closed and the voting will follow. This part of the election will be run by a person in the club that doesn't hold any office. If there is only one person running for each position the vote will be for the approved slate and not individual ballots.

Officers for 2023:

President: Mark Leipert

Vice President: Molly Burlage

Treasurer: Jim Brennan

Secretary: Cathy Eskew

Next Regular Meeting: The January 11th meeting will be a Zoom meeting again. Our guest speaker will be Dr. Aaron Michael Barth from Rowan University who will talk about the glacial history of the Adirondack Mountains.

Field Trips:

Saturday, November 12th, Sewell Stream Trip: We weren't actually sure if this trip was going to occur or not because of the heavy rains the evening before. We had 4 members and 6 guests venture down into the slightly swollen stream due to the Friday night heavy showers. This was a great educational experience for some guests and a nearby neighbor. We made friends with a neighbor and now we can park closer to the stream. Fun was had by all including our younger guests, their parents, my daughter and her boyfriend. This trip had many learning and teaching opportunities. Many belemnites and Exogyras were found. It stayed cloudy but the temperature was 62 degrees. (See attached photos)

Saturday, November 27th, Ramanessin Creek. After everyone had eaten themselves into a turkey coma on Thursday, we travelled up to Ramanessin Creek for some Upper Cretaceous Marine fossils. Fred, John, Chris, Renee and I met in the parking lot of the Village Elementary School in Holmdel, NJ. It was a beautiful sunny day with a projected high of 58 degrees. We went down to the area we had collected at last time. The water level was down about 18 inches. The area was all clogged with sediment and iron reducing bacteria in the form of

gelatinous masses. It really wasn't worth screening/sieving the gravel. The best collecting was done on your hands and knees with your face about a foot above the gravel. I found around 2 dozen shark's teeth and one partial mosasaur tooth along with other unidentified material. Others found a few shark's teeth, possible bone pieces and unidentified materials/concretions. Our new members Chris and Renee were successful in collecting rocks for a project they were working on. It was a great day to be outdoors and to get some fresh air. Everyone had fun. (See attached photos)

Future Field Trips:

Rutgers Geology Museum Annual Open House, including presentations, rock and mineral identification program, and mineral sale. **WHEN:** Saturday, Jan. 28, 2023, 9 a.m. to 4 p.m. **WHERE:** Presentations in room 123, Scott Hall, and mineral sale in room 135, Scott Hall, 43 College Ave. Rutgers in New Brunswick, NJ

MAPS Museum Trip is in the planning stages. More details to come.

Mark Leipert, President

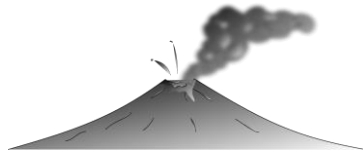


Shows and Events

Rutgers Geology Museum 55th Annual Open House Event: in-person on Saturday, January 28, 2023. This year's theme will be the "Geologic Coring," with a series of lectures and activities related to this topic. Mineral sale, kids activities, mineral and fossil identification. Special arrangements are made so that Open House Visitors can park in Rutgers Lots 11, 16, 26, 30, and the College Ave Deck, but you must register your vehicle to avoid a citation.

<https://geologymuseum.rutgers.edu/annual-open-house>

through Jan. 8, 2023 - Jaw Dropping World of Sharks, New Jersey State Museum, Trenton. Sharks and their relatives share a 400-million-year history and have a diverse family tree. They inhabit the world's oceans, rivers and estuaries evoking fear and mystery. But much this fear comes from a lack of understanding about sharks and their habitats. This exhibition dispels some of the myths and misunderstandings about sharks and their relatives by exploring their biology, fossil record, conservation and cultural significance. Specimens and artifacts from the New Jersey State Museum collections will be on display to demonstrate the truly jaw-dropping world of sharks!



News

Hawaii officials activate National Guard amid Mauna Loa eruption as lava flows toward key highway

<https://www.usatoday.com/story/news/nation/2022/12/06/mauna-loa-eruption-hawaii-state-national-guard/10843029002/>

Watch Hawaii's Mauna Loa Volcano Eruption Live On USGS Webcam

<https://weather.com/news/trending/video/watch-hawaiis-mauna-loa-volcano-eruption-live-on-usgs-webcam>

Mount Semeru In Indonesia Erupts, Creating Spectacle Of Lava And Ash

<https://weather.com/news/trending/video/mount-semeru-in-indonesia-erupts-creating-spectacle-of-lava-and-ash>

Photos

by Catherine Eskew

Sewell Stream Trip







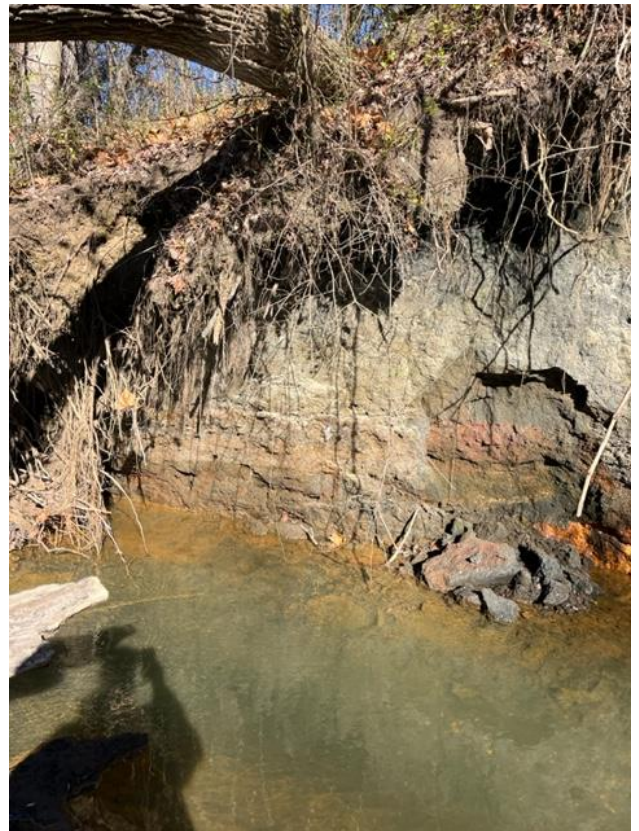


Ramanessin Creek trip

by Mark Leipert, and John Arsenault









Quote of the Month:

We still carry this old caveman-imprint idea that we're small, nature's big, and it's everything we can manage to hang on and survive. When big geophysical events happen - a huge earthquake, tsunami, or volcanic eruption - we're reminded of that. - **James Balog**

DVESS Directory for 2022

<u>Officers</u>	<u>Committee Chairs</u>
<p>President: Mark Leipert 856-524-2103 mark.leipert@yahoo.com</p> <p>Vice President: Jimmy Burlage james.burlage@outlook.com</p> <p>Secretary: Cathy Eskew ceskew5@gmail.com</p> <p>Treasurer: James Brennan 610-322-1540 brenimage@hotmail.com</p>	<p>Junior Rockhounds Chair:</p> <p>Millard LeCompte 609-458-7763 WorksInFaith08009@gmail.com</p> <p>Field Trips: Mark Leipert</p> <p>Co-Field Trips: Ed & Alice Houseal alicehouseal@verizon.net</p> <p>Membership: James Brennan</p>
<p><u>Newsletter</u></p> <p>Editor: Susan Moore aquamarinepaisleyorchid@yahoo.com</p>	<p><u>Other Information:</u></p> <p><u>Website:</u> www.DVESS.org</p> <p><u>Facebook:</u> DVESSNJ – Amy Simpson</p>



Membership Information

Regular memberships are entitled to participate in all DVESS activities.

Regular Membership:

\$20.00 for the 1st family member + \$5.00 for each family member

\$10.00 for the 1st Senior (65+) member + \$5.00 for each family member

Delaware Valley Earth Science Society Information

The Delaware Valley Earth Science Society, Inc. (DVESS), a non-profit organization, was founded in 1956 and incorporated in the state of New Jersey in 1957. The Society:

- promotes interest in, knowledge of, and the development of skills in the “earth sciences.” These interests include mineralogy, paleontology, lapidary arts, archeology, and local preservation.
- supports the conservation of natural resources, advocates the availability of collecting sites, and maintains close contact with those in the academic field.
- is a member club of the Eastern Federation of Mineralogical and Lapidary Societies (<http://www.AmFed.org/EFMLS>)

Delaware Valley Earth Science Society Inc. (DVESS)

Delaware Valley Earth Science Society

PO Box 602

Berlin, NJ 08009-0602

DVESS Website: <http://www.DVESS.org>



To submit an article or photos for publication in the DVESScapades, contact the Newsletter Editor at aquamarinepaisleyorchid@yahoo.com.

