

DVESScapades

escapades: interesting, stimulating, exciting activities and adventures



DELAWARE VALLEY EARTH SCIENCE SOCIETY NEWSLETTER



December 2023



Next Meeting: Wednesday, December 13th (in-person)

7:00 pm: Election of Officers, Holiday Party and gift exchange

Looking Ahead: upcoming meeting, Wednesday, January 10th, 2024

Meeting location: Education Bldg. behind Centenary United Methodist Church,
149 South White Horse Pike, Berlin NJ 08009

President's Message

I have been President of our club for almost 10 years. I'd like to thank everyone who supported me over the years including during trying times like the pandemic and using innovative ways to hold meetings (Zoom and hybrid meetings), where other clubs stopped everything. We continued to go on field trips throughout the pandemic, where other clubs stopped everything. It's been a pleasure serving.

Merry Christmas, Happy Hanukkah, Happy Kwanza and Happy New Year to you and your families. Be safe and enjoy time with family and friends. During the winter months when there is a better chance for inclement weather, we will still be Zooming. When we start face-to-face meetings on a regular basis, we will also continue with Zooming to appeal to out-of-state members. We will continue taking trips as weather permits. We are making plans for our winter and early spring field trips now. Please contact me should you have any ideas of localities or specimen types (fossil or minerals) you would like to visit. Remember we are approaching museum trip season. In January we have trips to the Delaware Museum of Natural History and Rutgers's Geology Museum Open House on January 27th.

Dues: Annual club dues are due for 2024. The base fee is \$20.00 while each additional member from a family will increase to \$15.00. This increase will help cover EFMLS dues and insurance per person. Senior citizens will remain at \$10.00 for the year.

December 13th, 2023: Holiday Party: Holiday Party and gift exchange. The gift should cost no more than \$15.00; if you give a gift, you get a gift. Everyone is to bring a dessert to share with others. The club will provide a variety of food, similar to last year, as well as drinks (coffee, tea, soda and water). We are looking for people to bring desserts. Please sign up by "replying all" to the official club announcement, to let everyone know how many are coming and what you are bringing as a dessert. Feel free to bring in a few mineral specimens to identify, give away or trade or we can have an open discussion on possible field trip ideas. I hope to see everyone there. Please don't forget to sign up. There will be no 50/50 or prize table at the party. The points of contact for the party are: Ray and Barbara Pape (rhpage@comcast.net , bapape@hotmail.com) and myself mark.leipert@yahoo.com .

Election of Officers for 2024: Finally, we will be holding the official election of officers for 2024. Since there is only one person running for each office, there is no need for a paper ballot. We will just confirm by asking for a show of hands. There will be plenty of opportunities for others to help at club functions, be a chairperson of a committee or lead a field trip.

Since there is only one person running for each position, the vote will be on the approved slate of officers. A club member who is not running for a position will carry out the election.

Officers for 2024:

President: John Arsenault

Vice President: Mark Leipert

Treasurer: Jim Brennan

Secretary: Cathy Eskew

Next Regular Meeting: January's meeting will most likely be a hybrid type (in-person along with Zoom) meeting again.

Field Trips:

Delaware Museum of Natural History, January 13th: Meeting at the museum around 10:00. Details to be provided in the January newsletter as far as a meeting place to carpool to museum.

Rutgers Geology Museum Annual Open House, Saturday, January 27th:

Includes presentations, rock and mineral identification program, and mineral sales.

WHEN: Saturday, Jan. 27th, 2024, 9 a.m. to 3 p.m. WHERE: Lectures and fun filled activities focusing on ancient sea life such as mosasaurs and trilobites.

Lectures in room 123, Scott Hall, and mineral sale in room 135, Scott Hall, 43 College Ave. Rutgers in New Brunswick, NJ. See Shows and Events, below, for more details.

Mark Leipert, President



On Friday, November 17th, Fred, myself along with Dr. Zack Boles from Rowan University ran a field trip for his class at the Sewell Fossil Creek. Everyone found many belemnites, exogyras and a shark tooth. I took one more shovel full of material before I left and I found a 62 mm mosasaur tooth in great condition. If the weather stays warm enough we may still run a few more trips down to the stream through December.

Mark

Shows and Events

January

Rutger's Geology Museum Open House, January 27th - The theme of the Geology Museum's 56th Annual Open House Event in January 2024 will be Ancient Seas! A fun-filled day of lectures and activities focused on ancient sea life like mosasaurs and trilobites!

<https://geologymuseum.rutgers.edu/annual-open-house>

Special arrangements are made so that Open House Visitors can park in Rutgers Lots 11, 16, 26, 30, and the College Ave Deck, but you must [register your vehicle](#) to avoid a citation. Additional

parking is also available in the metered spots on the local roads and in the parking decks in downtown New Brunswick labeled "P". Both of these options require payment to be made. The city will ticket on Saturday at the meters.



March

2024 Mineral Treasures and Fossil Fair Saturday March 23, 10 am to 5 pm; Sunday, March 24, 10 am to 4 pm. Lulu Temple, 5140 Butler Pike, Plymouth Meeting, PA., (PA Turnpike, exit 333; or I-476, exit 20) Free Parking. Adults: \$7.00. Kids 12 and under: \$2.00; Uniformed scouts and troop leaders free. **Special Features:** On both days a line-up of distinguished professional speakers will be presented. In addition, there will be fossil and mineral displays, educational materials, door prizes and a food concession. Thirty dealers will offer fossils, minerals, crystals, and jewelry from all over the world, as well as books, decorative items, and other merchandise. Demonstrations of micro-specimens will be presented throughout the show by the Leidy Microscopical Society. Young visitors can enjoy the annual fossil dig for children, and the kid's corner with free mineral and fossil specimens.

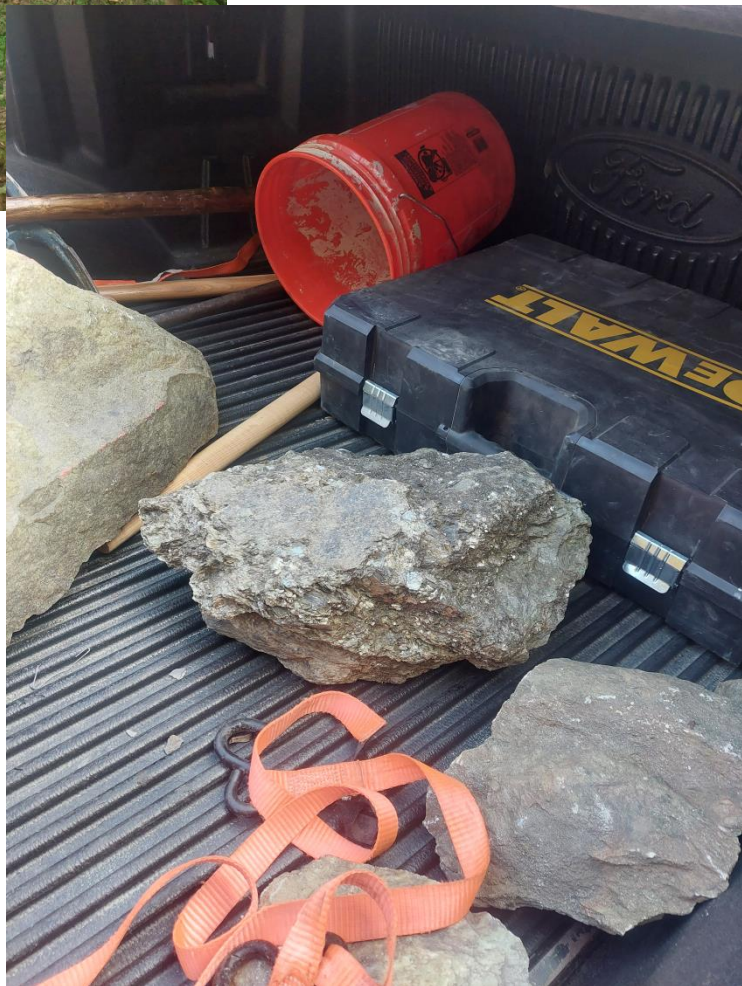
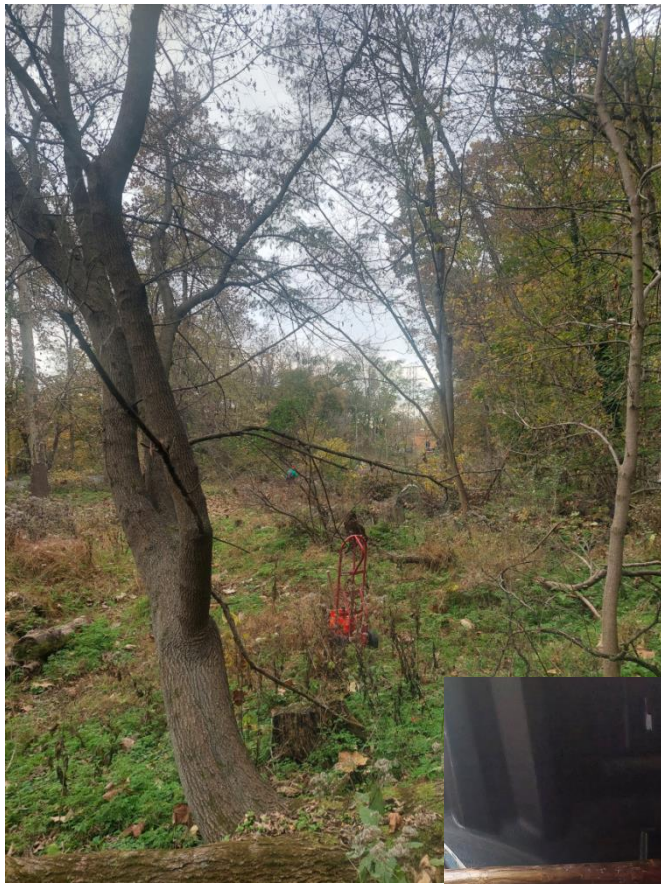
Information: www.phillyrocks.org. Contact: Cheryl Leibold, cleibold@verizon.net

Photos

by Fred Hochkile

Easton, PA, November 4th







Vincetown

Goodby trip for Dr Paul Ullman, a good friend of our club.





Quote of the Month

The real wealth of the Nation lies in the resources of the earth - soil, water, forests, minerals, and wildlife. [Rachel Carson](#)

DVESS Directory for 2023

Officers

President: Mark Leipert 856-524-2103

mark.leipert@yahoo.com

Vice President: John Arsenault

Secretary: Cathy Eskew

ceskew5@gmail.com

Treasurer: James Brennan 610-322-1540

brenimage@hotmail.com

Committee Chairs

Junior Rockhounds Chair:

Millard LeCompte 609-458-7763

WorksInFaith08009@gmail.com

Field Trips: Mark Leipert

Co-Field Trips: Fred Hochkile

Membership: James Brennan

Other Information:

Newsletter

Editor: Susan Moore

aquamarinepaisleyorchid@yahoo.com

Website: www.DVESS.org

Facebook: [DVESSNJ](#) – Amy Simpson



Membership Information

Regular memberships are entitled to participate in all DVESS activities.

Regular Membership:

\$20.00 for the 1st family member + \$5.00 for each family member

\$10.00 for the 1st Senior (65+) member + \$5.00 for each family member

Delaware Valley Earth Science Society Information

The Delaware Valley Earth Science Society, Inc. (DVESS), a non-profit organization, was founded in 1956 and incorporated in the state of New Jersey in 1957. The Society:

- promotes interest in, knowledge of, and the development of skills in the “earth sciences.” These interests include mineralogy, paleontology, lapidary arts, archeology, and local preservation.
- supports the conservation of natural resources, advocates the availability of collecting sites, and maintains close contact with those in the academic field.
- is a member club of the Eastern Federation of Mineralogical and Lapidary Societies (<http://www.AmFed.org/EFMLS>)

Delaware Valley Earth Science Society Inc. (DVESS)

Delaware Valley Earth Science Society

PO Box 602

Berlin, NJ 08009-0602

DVESS Website: <http://www.DVESS.org>



To submit an article or photos for publication in the DVESScapades, contact the Newsletter Editor at aquamarinepaisleyorchid@yahoo.com.

