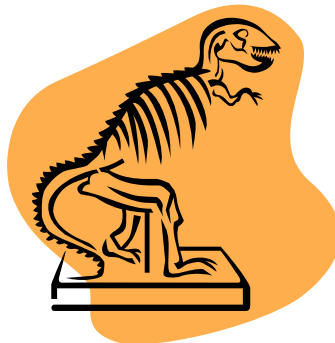


DVESS *capades*

escapades: interesti ng, sti mulati ng, exciti ng acti viti es and adventure



Fossil Edition



(bare bones)



DELAWARE VALLEY EARTH SCIENCE SOCIETY NEWSLETTER

Meeting: Jan. 11, 2012

Program: Star Show at Edelman Planetarium – Rowan Univ.

The meeting will **NOT be held at
Centenary United Methodist Church in Berlin.
The meeting **IS** the Program at Rowan.**

DIRECTIONS to Rowan University Planetarium

From Rt. 55 Southbound (from Rt. 42)

Exit 53A will put you on Rt. 553 (Woodbury-Glassboro Rd.) headed South.

Proceed @ 3 miles.

The road will curve sharply LEFT; turn RIGHT onto Rt. 47 (Delsea Drive) South
(Collegetown Shopping Center will be on your right).

At the next traffic light, turn RIGHT onto William L. Dalton Drive*

Proceed thru two traffic lights (then past one house, then Glassboro High School will be on your right).

BEFORE THE RAILROAD TRACKS, turn LEFT into the school drive (North Campus Dr.)
(this road ends at the parking lot where you will park)**

Turn sharply LEFT and drive along the edge of the parking lot (all the cars will be on your right)
as far as you can go and park.

Walk to the LEFT to the same edge of the parking lot you were driving along and turn RIGHT at the path (the building you were facing when you drove along the edge of the parking lot – Westby Hall - will be to your right).

Proceed down this path to the next building and turn right (into the court – the building is U-shaped). The entrance to the Planetarium will be in front of you.

* after you turn at this light the name of the street changes to Heston Rd (between the lights at Delsea Drive and the light at Rt. 533 alt)

then it becomes Donald Barger Blvd. (between Rt. 533 alt and Fairmount Dr.)

then Heston Rd. again (to the light at Carpenter St.),

then Bowe Blvd. (in front of Glassboro High School)

** if you pass the railroad tracks, you will come to the traffic light at Rt. 322; the parking lot will be on your left, but YOU CANNOT ENTER THE PARKING LOT from Rt. 322 eastbound

If you need further directions, use Google maps from your location to Glassboro High School (560 Joseph L Bowe Boulevard Glassboro, NJ 08028) or call Ann at 856-783-0969 or 609-458-7821.

President's Message: January 2012 by AnnLynne Benson

Let me begin by wishing everyone a Happy New Year. Here's to a Rockin' 2012!!

SO YOU SAY you'd like to own a replica of a megalodon tooth, a raptor egg, or mastodon tusk, maybe even a model of an entire dinosaur? Well step right up, my friends, to the website <http://jurassicjourneyexhibits.com/>.

On the very top row of pictures, in the very center, you will see the Ornitholestes ("bird robber" - a small theropod dinosaur of the late Jurassic of the area that was to become North America) now displayed in front of the picture window in my living room (actually all of the models are individually painted, so no two are exactly alike; mine is a little more brown than the green shown in this photo).

We also got the megalodon tooth (2nd row, 3rd from the right) and a laser-cut metal sculpture of a raptor (not shown).

All this acquisitioning took place at the Greater Phila. Expo Center on Black Friday (honey, you know if the Selenite Queen is going shopping on Black Friday, it's not to buy tea towels!). Garrett, Michael Murphy and I thoroughly enjoyed the enormous display at the Family Fun Fest (<http://www.fffest.com/>).

The highlight of this show was a replica of the Burning Tree Mastodon - one of the most complete mastodon skeletons ever found (95 percent of the bones were recovered) - named one of the top 50 science discoveries of 1990 by *Discover* magazine. The animal is believed to have died in a marsh 11,000 to 12,000 years ago.

It was found at the Burning Tree Golf Course in Newark, Ohio. While digging ground for a new pond on the golf course, a backhoe got caught on some large bones that turned out to be the mastodon.

Like Mel (our Junior Rockhounds teacher), entrepreneur Sherm Byers - owner of the golf course and the mastodon – didn't know a mineral from a fossil in 1989 when the discovery was made. He spent the next eight years making lifelike and life-sized dinosaur replicas which he displayed at the Ohio State Fair in 1997. More than 500,000 people attended the display in 17 days; Byers began taking his show on the road, and since 2001, has done four to six shows per year.

Since then he has perfected his craft to the point that he sells replicas to international clients including Disney, MGM and museums. The mastodon was sold to the Kanagawa Prefectural Museum in Yokohama, Japan, in 1993 for \$600,000.

DUES ARE DUE, FOLKS – Kindly pay by PayPal; check or cash at the meeting; or check sent thru snail mail (DVESS, P.O. Box 372, Maple Shade, New Jersey 08052). You know how much this club means to you – keeping your membership current entitles you to insurance thru the Eastern Federation (no insurance, no field trips)!!

MANY, MANY THANKS to Carol DeCuzzi for her years of outstanding service as newsletter editor. Carol brought us many puzzles and articles from her vast storehouse of knowledge and Diamond Dan publications. Carol reluctantly resigned in order to spend time with husband **PETE DECUZZI** who became ill suddenly last month. Pete's surgery went well; 95% of the mass was removed and found to be non-cancerous. He even recognized family members when they visited during the holidays. Pete's in a rehab in Camden and Carol is with him most of the time. Sincere good wishes to Pete for a speedy recovery.

MARK YOUR CALENDARS – **January 28, 2012** – **New Brunswick, NJ**
– Rutgers University Geology Museum Open House, 135 Scott Hall, Mineral sales and free lectures. There will also be Mineral Identification available in the Geological Hall which also includes displays. (9am-4 pm).

March 3-4, 2012 - Newark (Stanton), DE - 49th Annual Earth Science Gem & Mineral Show sponsored by the Delaware Mineralogical Society. Delaware Technical & Community College, I-95, Exit 4B, Newark (Stanton), DE.



WEBSITE OF THE MONTH

<http://www.carnegiemnh.org/online/hillman/movies/gallery.html> - View 18 exquisite minerals in a 360 degree view; the Heulandite & Stilbite specimen resembles a twirling princess ballerina and her prince. Another website: <http://www.MineralMovies.com/php/gallery.php> (click on each picture for a 360 degree view).

WILDACRES

Wildacres is a private retreat nestled just off the Blue Ridge Parkway near Little Switzerland, NC. Organizations such as the Eastern Federation (EFMLS) have the opportunity to utilize this facility for workshops during the year - all at a very, very nominal rate. Lodging is in modern private rooms; all meals are included and because Wildacres is on its own private mountain, we're away from traffic noise, pollution, blaring radio and TV. We do get to hear the sounds of birds chirping and happy voices!

The Spring session of fun and learning is April 10 - 15. World renowned photographer Jeff Scovill will be our keynote speaker. Jeff will share six illustrated programs with us during the week. In addition, all participants will have an opportunity to take one or two classes taught by an outstanding cadre of instructors.

The fall session will be held from September 3 - 9 and will feature Julian Gray, curator at the Tellus Museum in Cartersville, GA as keynote speaker. As in Spring, participants will have an opportunity to take one or two classes during their time together, again taught by outstanding instructors.

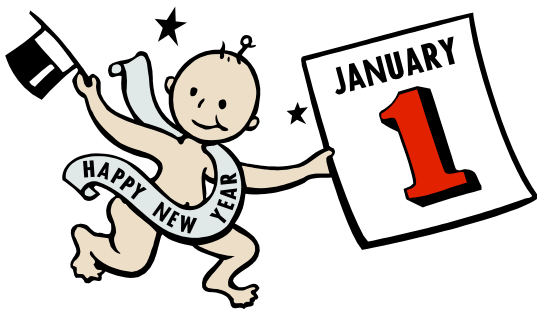
A list of class offerings for each session can be found on pages 6 and 7 of the January EFMLS Newsletter at <http://www.amfed.org/efmls/efjan12web.pdf> and an application form is on page 8. Register as early as possible since class size is limited.

AND if you've never been to an EFMLS Wildacres Workshop, you can apply for one of two scholarships being given this year. Information and an application form can be found on the Wildacres web site <www.amfed.org/efmls> Just click on the Wildacres tab. Tuition for the April session is \$350 per person. For September it will be \$370 per person. The only additional cost to participants will be for materials used in the class or classes taken and we make every endeavor to keep these reasonable.

Registration opens for both sessions on January 1. Why not bring a few of your fellow club members with you and perhaps make it a club field trip? I'm looking forward to seeing you at Wildacres in 2012!

CLUB BROCHURES – Please pick up one or two yellow club brochures and have them on hand in your vehicle or handbag to give out to folks. If you see a parent and child, strike up a conversation by asking, “Does your child like rocks or dinosaurs?” Offer them a club brochure; if they’re not from our area, addresses and websites for the American Federation and EFMLS are on the back of the brochure. Your small gesture may make a world of difference to that child, his/her family, and to our club. New folks, especially kids, are the lifeblood of every club! If we want this club to continue providing us with speakers, activities and lots of fun, we MUST invest just a little bit of effort to get the word out.

MARK YOUR CALENDARS – The East Coast Vulture Festival will be held in nearby Wenonah, NJ on Saturday, March 3, 2012 from 2 pm-5 pm at the Wenonah Community Center (former train station) See <http://www.eastcoastvulturefestival.org/> for more info. all events are FREE.



The current issue of EFMLS News now available at <http://www.amfed.org/efmls/efjan12web.pdf>

QUOTE OF THE MONTH: “You may be disappointed if you fail, but you are doomed if you don’t try.”

SAVE THE DATE: Saturday April 30, 2012
STERLING HILL SUPER DIGG

MINUTES OF DECEMBER 14, 2011 GENERAL MEETING

by Grant Elliott, (reluctant) Recording Secretary (for life)

CHRISTMAS/HOLIDAY PARTY meeting was held at Centenary UM Church in Berlin, NJ, where good food was provided by everyone in attendance.

ATTENDANCE: Gary Weinstein- Treasurer/Program Chair, AnnLynne Benson- Acting President/1st VP/Special Events Coordinator, Grant Elliott- Recording Secretary, Lou Detofsky - 2nd VP (and his better half, Ilene), and Mil LeCompte- Jr. Rockhound Coordinator. Attendees also included Gerald Feigin, Mark Leipert, Lance Schnatterly, Evelyn Viskovich, Meredith Taylor, amongst esteemed others.

PROGRAM: At 8:00pm, Grant and Lance “thrilled” the attendees with a showing of T-REX BACK TO THE CRETACEOUS, an IMAX movie presented previously at the Smithsonian. The showing included terse comments from the Gerald Feigin peanut gallery part of the audience. It couldn’t get any better than that. The gift exchange took place with surprises galore.

ELECTIONS: The 2012 officers were elected: AnnLynne Benson- President, Mark Leipert- 1st VP, Lou Detofsky- 2nd VP, Grant Elliott- Recording Secretary (Val Korszniak- Backup Secretary), Gary Weinstein- Treasurer, Gerald to mentor the “senior” Junior Rockhounds (14-18 years of age) and Mil to teach the “juniors” (8-13 years of age).

DUES: Gary is awaiting receipt of 2012 membership dues- Let’s get it up, folks.

FUTURE PROGRAMS:

January 11th- Meet at Rowan University Planetarium.

The rest of 2012- Dick Bostwick, Derek Yoost, John Sanfacon, Randy Lyons among the possible speakers.

There was some good feedback regarding our special meeting on November 22nd, which featured paleontologist Walter Stein. Thank You Lance.

NEXT EXECUTIVE BOARD MEETING: Exec on December 21st at Gary’s shop.

Meeting concluded at approximately 10.00pm.

DUES – PAYS for your Eastern Federation insurance- DUE NOW!!!

Regular Membership:

\$15.00 for the 1st family member + \$5.00 for each additional family member

\$10.00 for the 1st Senior (65+) member + \$5.00 for each family member

\$10.00 for Rowan University Students with College ID

Sponsoring Membership (+\$5.00 for each additional family member):

“Silver” \$50.00 for 1st family member – receive a Geode Specimen

“Gold” \$75.00 for 1st family member – receive Native Gold Specimen

“Platinum” \$100.00 for 1st family member – receive Premium Specimen

THIS IS YOUR NEWSLETTER, FOLKS – It’s not a spectator sport unless you make it one. If you know about a show, let us know about it too, and we’ll let others know. Are you going on a little field trip of your own? Why not invite others to go along? We’re just a quick phone call, text or email away. Did you read a great article? Send it in, or at least send us the link! WE WILL BE MIGRATING THE NEWSLETTER TO A MORE TECHNO-FORMAT – soon you will be receiving more news thru the Yahoo group – so pay attention to those messages. Some of us think we need a “formal” newsletter, while others do not share that view. What do you think? Let us know.

SOCIETY INFORMATION

The Delaware Valley Earth Science Society, Inc. (DVESS), a non-profit organization, was founded in 1956 and incorporated in the state of New Jersey in 1957. The Society:

- promotes interest, knowledge, and the development of skills in the “earth sciences.” These interests include mineralogy, paleontology, lapidary arts, archeology, and local preservation.
- supports the conservation of natural resources, advocates the availability of collecting sites, and maintains close contact with those in the academic field.
- is a member club of the Eastern Federation of Mineralogical and Lapidary Societies (<http://www.AmFed.org/EFMLS>)

DVESS 2012 Officers & Positions

<p>President Newsletter Editor Special Events Coordinator <i>Ann Lynne Benson</i> (856) 783-0969 (h) (856-418-6121 (c) SeleniteQueen@gmail.com</p>	<p>1st Vice President <i>Mark Leipert</i> 609-567-7551 (h) mark.leipert@yahoo.com</p>	<p>Treasurer Program Chair Membership Chair <i>Gary Weinstein</i> (856) 234-0708 – h (856) 795-5077 – work garyskyrock@comcast.net</p>
<p>2nd Vice President <i>Lou Detofsky</i> <i>“Doc Rock”</i></p>	<p>Recording Secretary <i>Grant Elliott</i> (856) 728-1731 gle@verizon.net</p>	<p>Website Coordinator <i>Terry Wilson</i> terry@dvess.org</p>
<p>Junior Rockhounds Teacher ages 8-13 <i>Mel LeCompte</i> (856) 783-0969 RocksandBadges@yahoo.com</p>	<p>Backup Secretary <i>Val Korszniak</i> KNVN32F@Yahoo.com</p>	<p>Junior Rockhounds Teacher ages 14-18 <i>Gerald Feigin</i> gfeigin@co.gloucester.nj.us</p>