

# DVESScapades

*escapades: interesting, stimulating, exciting activities and adventures*



## DELAWARE VALLEY EARTH SCIENCE SOCIETY NEWSLETTER



January 2020

**Next Meeting:** January 8th

7:00 pm Junior Rockhounds class and adult social hour

8:00 pm Program: Election of officers



Meeting location: Education Bldg. behind Centenary United Methodist Church,  
South White Horse Pike, Berlin NJ 08009

## President's Corner:

I hope everyone had a Merry Christmas, Happy Holidays and a Happy New Year! The freezing temperatures usually prevent us from collecting outside during the winter months. Lately though, we've had some unseasonal temperatures. We expect to visit museums, universities, lecture circuit and shows, during this time frame. If you have a favorite or one you might like to visit or get a behind the scenes tour text or email me with your idea (within reason).

**Election of Club Officers for 2020:** We postponed our annual club elections from the December meeting to our January meeting. If you would like to help out but not as an officer, we have several committees that need someone to help run. We will need volunteers to help run the following committees: picnic, special events, field trips, club banquet and Christmas Party. Our Executive Board meetings are open meetings, anyone is allowed to attend. The current slate is as follows:

President – Mark Leipert

Vice President – Amy Simpson

Secretary – Open for nominations???

Treasurer – Jim Brennan

We will be taking names from the floor for any officers. The nominations will close at the end of the January business meeting.

**Help Wanted! Our club needs a new Secretary. The candidate needs to attend executive board meetings, regularly. Will provide minutes to previous meeting (typed). Needs to have access to a computer. Will need to take notes in agreed upon format. If interested please contact Mark Leipert at [mark.leipert@yahoo.com](mailto:mark.leipert@yahoo.com).**

**Rutgers' Geology Open House, Saturday, January 25, 2020:**

Rock and minerals sales, special activities for youth at the Geology Museum and guest lecturers. More information is under Shows and Events, below.

**Paleo-palooza 2020 at The Academy of Natural Sciences at Drexel University, March 7<sup>th</sup> and 8<sup>th</sup>:** Many events for kids. Stay tuned for details.

**Fossil Fair and Mineral Treasures Show, Saturday and Sunday, March 28<sup>th</sup> and 29<sup>th</sup> of 2020:** To be held at the LuLu Temple off of Butler Pike in Plymouth Meeting. More details to follow.



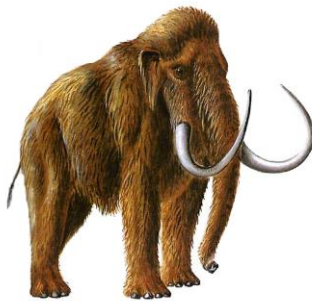
**Super Diggg 2020, Franklin Mineral Museum, on April 25, 2020:** Mark your calendars; we will need everyone's help to make this event work. More details to come in future months

**Mark Leipert, President**

## News

**Oldest Ever Fossil Lice Discovered in Amber**

<https://www.insidescience.org/news/oldest-ever-fossil-lice-discovered-amber>



## Quote of the Month:

What happened to those Ice Age beasts? What caused the mammoth and mastodon and woolly rhinoceros to pay the ultimate Darwinian penalty, while bison and musk ox survived? Why didn't the fauna of Africa suffer the kinds of losses evident in other regions of the world? And if something like climatic change caused the extinction of North America's Pleistocene horse, how have feral horses managed to reestablish themselves on the western range?

— John R. Alden (1986)

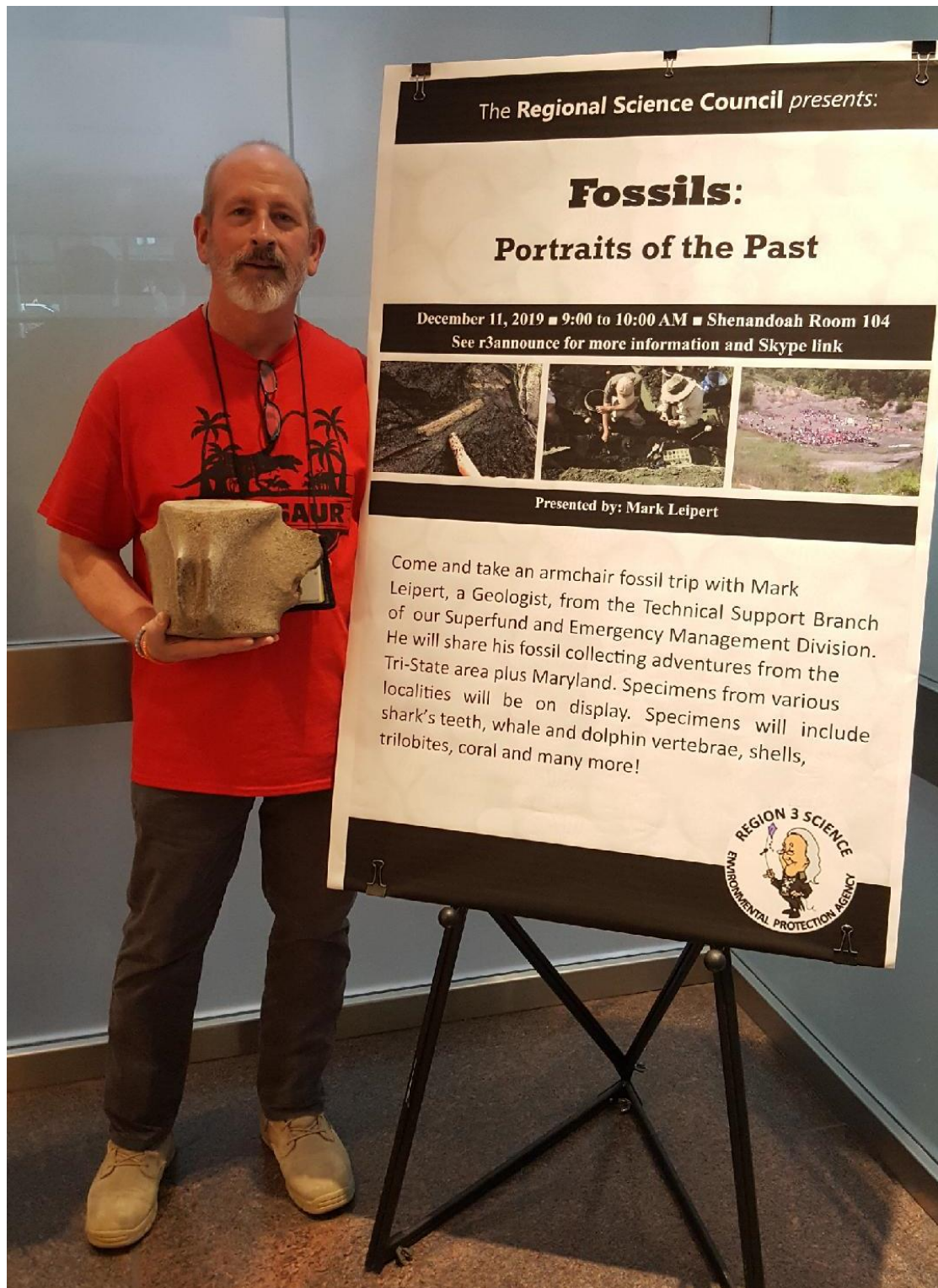
## Photos

Bob Todd presented an interesting short topic on the meteor that hit and made the Chesapeake Bay area, the mineral reidite, and Egyptian glass.





Mark Leipert presented a talk at EPA Region 3, in Philadelphia, on **Fossils: Portraits of the Past**



## Shows and Events

### 2020

#### January

**January 11 - The 2020 Philadelphia Mineralogical Society Swap and Sell.** 9 am to 12:00 pm, at Cathedral Village Center, 600 E. Cathedral Rd., Philadelphia (Andorra), 19128. Free Admission, open to the public. Contact: John Rateike, 215-576-0741 ([jdrat@comcast.net](mailto:jdrat@comcast.net))

**January 25: The 52nd Annual Rutgers University Geology Museum Open House** will take place on Saturday, January 25, 2020 between 9 am and 3 pm. Come for a day of natural disaster-themed activities! All events will be held in Scott Hall and the Rutgers Geology Museum located on the College Avenue Campus in New Brunswick, NJ. <https://geologymuseum.rutgers.edu/museum-events/annual-open-house>

#### Lecture Series

10 am to 11 am: "How the 1849 Gold Rush and the 1906 San Francisco Earthquake Enabled us to Divine our Seismic Future" Dr. Ross Stein, Temblor Inc.

11:30 am to 12:30 pm: "Science in the Public Eye - How a Study of the Physical Properties in the Earth becomes a Threat of Volcanic Catastrophe" Dr. Vadim Levin, Department of Earth and Planetary Sciences, Rutgers University

2 pm to 3 pm: "After Disaster Strikes - Economic Impacts from Natural Disasters and How Modeling Technology Helps Institutions Prepare" Megan Arnold, Risk Management Solutions

#### March

**March 7-8: Delaware Mineralogical Society 57th Gem, Mineral and Fossil Show**, Doubletree by Hilton, 4727 Concord Pike (Rt 202), Wilmington, DE 19803. Saturday 10-5, Sunday 11-5. Mineral and fossil dealers; gem, jewelry & lapidary supplies; demonstrations, exhibits and door prizes. Adults \$6, Seniors \$5, Juniors (age 12-16) \$4, free to children and scouts in uniform. [www.delminisociety.net](http://www.delminisociety.net)

**March 28-29: Philadelphia Mineral Treasures and Fossil Fair.** Saturday 10 am to 5 pm; Sunday, 10 am to 4 pm. Lulu Temple, 5140 Butler Pike, Plymouth Meeting, PA., (PA Turnpike, exit 333; or I-476, exit 20). Free Parking. Adults: \$6.00. Children under 12: \$1.00; Uniformed scouts and troop leaders free. Special Features: On both days a line-up of distinguished professional speakers will be presented. The Academy of Natural Sciences of Philadelphia will present a display of minerals from its collection. In

addition, there will be fossil and mineral displays, educational materials, door prizes and a food concession. Thirty dealers. Young visitors can enjoy the annual fossil dig for children, and the kid's corner with free mineral gifts. Information: [www.phillyrocks.org](http://www.phillyrocks.org). Contact: Cheryl Leibold, [cleibold@verizon.net](mailto:cleibold@verizon.net).

## **April**

**Super Diggg 2020, Franklin Mineral Museum, on April 25, 2020:** Mark your calendars; we will need everyone's help to make this event work. More details to come in future months.



## Membership Information

*Regular memberships* are entitled to participate in all DVESS activities.

### *Regular Membership:*

\$20.00 for the 1st family member + \$5.00 for each family member

\$10.00 for the 1st Senior (65+ ) member + \$5.00 for each family member

## Delaware Valley Earth Science Society Information

The Delaware Valley Earth Science Society, Inc. (DVESS), a non-profit organization, was founded in 1956 and incorporated in the state of New Jersey in 1957. The Society:

- promotes interest in, knowledge of, and the development of skills in the “earth sciences.” These interests include mineralogy, paleontology, lapidary arts, archeology, and local preservation.
- supports the conservation of natural resources, advocates the availability of collecting sites, and maintains close contact with those in the academic field.
- is a member club of the Eastern Federation of Mineralogical and Lapidary Societies (<http://www.AmFed.org/EFMLS>)

### **Delaware Valley Earth Science Society Inc. (DVESS)**

Delaware Valley Earth Science Society

PO Box 602

Berlin, NJ 08009-0602

DVESS Website: <http://www.DVESS.org>





To submit an article or photos for publication in the DVESScapades, contact the Newsletter Editor at [aquamarinepaisleyorchid@yahoo.com](mailto:aquamarinepaisleyorchid@yahoo.com).

