

DVESScapades

escapades: interesting, stimulating, exciting activities and adventures



DELAWARE VALLEY EARTH SCIENCE SOCIETY NEWSLETTER



June 2016

CELEBRATING OUR 60TH YEAR

Next Meeting: June 8th

7:00 pm Junior Rockhounds class and adult social hour

8:00 pm Program: **Fred Schwartz on Crystal Formation**

NOTE: There will be no regular meeting in July or August, but look for upcoming news on the Annual Picnic



Meeting location: Education Bldg. behind Centenary United Methodist Church, 149 South White Horse Pike, Berlin NJ 08009

PRESIDENT'S MESSAGE

SUPER DIG was a great success this year (300 participants whereas last year we had only 250 and the year before that we were swamped with 400); we welcomed glowhounds from across the USA and Canada who took home over 6566 pounds of fluorescent minerals.

Jeff Winkler (Sterling) and Mel LeCompte (DVESS) did splendid jobs organizing and running the Dig. We had 18 adult volunteers and five Juniors, plus two troops of Boy Scouts; key volunteers assembled at 6:15 am and we were still checking folks out at 11 pm. Nearly everyone had vacated the Registration area by 11:30 pm except yours truly and Jeff Winkler; the wrap-up meeting lasted til half past midnight (that is one looong day, and a looong week for Mel who was there 7 days and only slept about 4 nights).



We were able to house more volunteers on site than we ever did (not having to pay for a motel room attracts more volunteers). We had few, if any, thefts of poundage (none of our staff saw anyone slipping out with rocks not paid for – that's a first!). Cheryl Neary and her team (Faith Schwab, age 17) bravely handled the daunting task of running the new cash register (there were several bugs in this system that need to be worked out in the future). Jim Brennan did a marvelous job crunching the numbers. Ann Benson successfully handled last minute flubs and made purchases to cover them (where are those receipts??).

Some things were a little frustrating; the check-in and weigh-out volunteers (new recruits DVESS Secretary Sherry Sisson and Gary's sister Sarah Williams) were winging it for the first time without the expert guidance of Rick and Alice who have led this team for umpteen years. We owe Rick and Alice an immense debt of gratitude for their hard work all these years!

Volunteers from Lower Bucks were President Brian Schwab along with his wife Holly and kids Faith and Zach, newsletter editor Eric Brosius, Herb Kropnick, Jeannine and grandson Joey.

The important success of the day was – **everybody had a good time**. Volunteers and collectors alike were smiling and very happy at the day's experiences (with the possible exception of one or two people who were somewhat less than jovial waiting in a longish check-out line). Nearly everyone I spoke with expressed interest in returning the next time.

AnnLynne Benson
President

Field Trips

Mark Leipert, our Field Trip Coordinator had knee replacement surgery at the end of May. If anyone would like to lead a field trip while Mark is recovering, please email him with details.



News

Australia's volcanic history is a lot more recent than you think

<http://phys.org/news/2016-05-australia-volcanic-history-lot.html>

Activity in Colombian Volcano Sparks Concern

<http://glacierhub.org/2016/06/01/activity-in-colombian-volcano-sparks-concern/>

Seven dead after Sumatra volcano eruption

<http://www.therakyatpost.com/world/2016/05/22/six-dead-after-sumatra-volcano-eruption/>

Steamy, dusty volcanic field near Naples shows Earth's power

<http://www.newstimes.com/news/article/Steamy-dusty-volcanic-field-near-Naples-shows-7939747.php>



Photos - by Jim Brennan

Ramanessin Creek and Big Brook, May 14th







Quote of the Month

What you do on a dinosaur expedition is you hike and look at the ground. You find bones sticking out of the dirt and, once you see something, you dig. *Nathan Myhrvold*



Shows and Events

June

2016 Spring Mineralfest: Saturday, 4 June 2016, 8:30 am to 3:00 pm. Macungie Memorial Park, Macungie, Pennsylvania. One hundred tables with minerals, fossils, gems, jewelry, crystals and geodes. Mineralfest is the biannual mineral, fossil, and gem show sponsored by the Pennsylvania Earth Sciences Association. Free parking. A family-oriented event - younger attendees encouraged. Adult admission only \$2.00; Free admission and mineral specimens for children under 12. <http://mineralfest.com/>

Dinosaurs Unearthed - June 25, 2016–January 16, 2017 - Academy of Natural Sciences. Back by popular demand—roaring, moving, life-size animatronic dinosaurs invade the Academy for a multi-sensory experience for the whole family. *Dinosaurs Unearthed* features more than a dozen realistic, full-bodied dinosaurs, as well as skeletons, fossil casts of skulls, claws, and horns, real specimens of mosasaur and spinosaurus teeth, an *Oviraptor* egg, and the ever-popular coprolite. Fee in addition to museum admission. <http://www.ansp.org/visit/exhibits/dinosaurs-unearthed/?gclid=CI3Z79THswCFcshgodOqMFaQ>

October

Celebrate **Earth Science Week** (October 9-16, 2016). Theme: Our Shared Geoheritage. The [Earth Science Week](#) site contains Tips for Participants, Student Activities, Education Standards, Proclamations, Press Releases, Links and other information.

The Eastern Federation of Mineralogical and Lapidary Societies (EFMLS) will hold its annual convention on October 21-23 2016 in Rochester, NY. <http://www.amfed.org/efmls/conventionp.htm>

November

Gemarama 2016 - November 5-6: Oaks, PA - Tuscarora Lapidary Society's 47th annual fine gem, jewelry and mineral show, Saturday 10am – 6pm and Sunday 10am-5pm. HALL C at The Greater Philadelphia EXPO Center at Oaks. "Down Under" is this year's theme. More than 25 dealers. Demonstrations in lapidary and jewelry arts, and special activities for children. Food is available and parking is free. For more information and for show discount coupons, please visit the Society's web site at www.lapidary.org.

More SuperDig Photos reprinted with permission from *Rock Chatter*, Vol. 50, No. 5.



The rush to get registered, check in-check out tent.



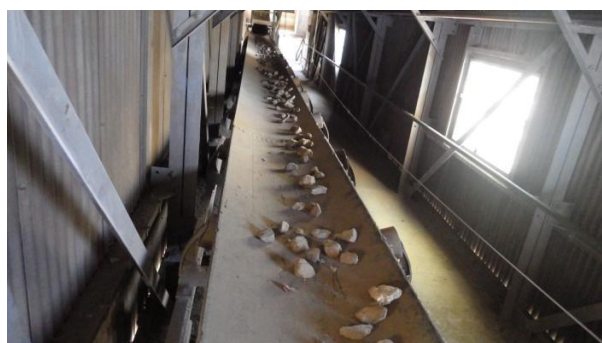
Preparations on Friday in the check in-check out tent.



Special specimens for collecting uncovering.



Dusk view of "Horse Head Ore Vein".



View of dryer and crusher in the mill house.



Conveyor of last ore from 1986.



Membership Information

Regular memberships are entitled to participate in all DVESS activities.

Sponsoring memberships are entitled to the same plus a specially chosen mineral specimen. Dues are renewable each year in January.

Regular Membership:

\$20.00 for the 1st family member + \$5.00 for each family member

\$10.00 for the 1st Senior (65+) member + \$5.00 for each family member

Sponsoring Membership: (each additional family member - \$5.00)

“Silver” \$50.00 for 1st family member – receive a Geode Specimen

“Gold” \$75.00 for 1st family member – receive Mineral Specimen

“Platinum” \$100.00 for 1st family member – receive Premium Specimen

Delaware Valley Earth Science Society Information

The Delaware Valley Earth Science Society, Inc. (DVESS), a non-profit organization, was founded in 1956 and incorporated in the state of New Jersey in 1957. The Society:

- promotes interest in, knowledge of, and the development of skills in the “earth sciences.” These interests include mineralogy, paleontology, lapidary arts, archeology, and local preservation.
- supports the conservation of natural resources, advocates the availability of collecting sites, and maintains close contact with those in the academic field.
- is a member club of the Eastern Federation of Mineralogical and Lapidary Societies (<http://www.AmFed.org/EFMLS>)

Delaware Valley Earth Science Society Inc. (DVESS)

P.O. Box 372

Maple Shade, New Jersey 08052

DVESS Website: <http://www.DVESS.org>



To submit an article or photos for publication in the DVESScapades, contact the Newsletter Editor at aquamarinepaisleyorchid@yahoo.com.

