

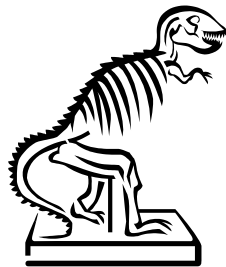
# DVESSCAPADES

*escapades: interesting, stimulating, exciting activities and adventures*

NEWSLETTER OF THE DELAWARE VALLEY EARTH SCIENCE SOCIETY

◇◇◇◇ our 56<sup>th</sup> year ◇◇◇◇

## Fossil Edition



(bare bones)

## November, 2012

### Table of Contents

- November Program highlights / Field Trips .....page 1
- Upcoming Programs / Minutes of the October General Meeting.....page 2
- President's Message / MICA.....page 3
- Upcoming Shows & Events .....page 4
- Humor .....page 5
- Membership Information / Society Information.....page 6
- 2012 Officers and Positions .....page 7

### November 14 Program

Our speaker will be author and fluorescent mineral specialist Dick Bostwick; see <http://sterlinghillminingmuseum.org/aboutus/fluorescentminerals.php>

### Field Trips

**Ramsey's Farm** - We'll be going to **Ramsey's Farm** (see article on "MICA" below) – date to be announced.

**Glencairn Castle** in Bryn Athyn - Ken Leap offered us a behind-the-scenes tour – highlight: their stained glass windows.

**Flag Ponds, anyone?** Right after the storm would be a great time to go. We called down there, and are awaiting a call back from them and **Matoaka Cottages** so we'll know when it's safe to go.

## Upcoming Programs

**December 12:** **Holiday party and annual elections** – bring a wrapped gift and receive a wrapped gift. FOOD – FOOD: bring a beverage and dessert to share! We'll watch a movie while waiting for Gary to arrive.

**January 9:** **Gene Hartstein** – C&D Canal

## Minutes

DVESS General Meeting on October 10, 2012

By Grant Elliott, Recording Secretary

October 10th meeting was held at Centenary UM Church in Berlin, NJ. Proceedings took place in the basement meeting room. President AnnLynne Benson gaveled commencement of the meeting at 7:55pm.

Attendance: AnnLynne Benson- President/Special Events Coordinator (tardy), Gary Weinstein- Treasurer/Program Chair, Grant Elliott- Recording Secretary, Mark Leipert- 1st VP, Carol DeCuzzi- Newsletter Editor/Membership Chair, Lance Schnatterly- Cyber Consultant, and Mil LeCompte- Jr Rockhound Coordinator/Facilitator. Bob & Sally Todd, Evelyn Viskovich, Stu Cleveland, and Lorraine Campbell were present amongst other attendees.

**Program:** Bob Thompson and wife, Diane from the Cumberland County Prehistorical Museum, Greenwich, NJ who told us about the stone Artifacts made and used by New Jersey Native Americans. Those Clovis Points were absolutely Spectacular.

### **Future Programs:**

November 2012- Dick Bostwick on an unnamed program at this time.

December 2012- Christmas party and 2013 Officer elections.

January 2013- Gene Hartstein on the C&D Canal.

**Special Events/Field Trips:** October 20th evening banquet 6:30pm to be held at Mandarin Buffet, where speaker Ken Leap will present "Minerals Used in Red Glass".

14 individuals signed up so far.

Field trip in the spring at Bob Todd's house to peruse boxes of specimens.

### **Proposed Elections:**

President: Mark Leipert

1st VP: Ann Benson

2nd VP: Lou Detofsky

Recording Secretary: Grant Elliott

Treasurer: Gary Weinstein

Carol would like to relinquish Newsletter Editor & Membership positions.

Lance won door prize.

October 17th Executive Board meeting at Grant's house.

Meeting adjourned at 9:30pm.



**Greeters Needed:** can you come early to the meeting and welcome new people? They'd appreciate it, and so would we!

**Your suggestion here:** What do YOU want to see our club do? Should we have badges again... paper-in-plastic badges or professional, permanent badges as we did in the dim past? Your comments and questions are welcome.

## PRESIDENT'S MESSAGE by AnnLynne Benson

We hope you weathered **SuperStormSandy** without harm or damage. We and our family are fine.

Many, many thanks to **SUSAN MOORE** for offering to take over as **NEWSLETTER EDITOR**. Susan is an editor and science writer by profession and I'm sure will do a great job!

Congratulations and welcome to new EFMLS president Cheryl Neary. Cheryl holds a BS in geology from NY State University at Oneonta and a Masters in Business Administration and belongs to several gem and mineral clubs. She is Treasurer of the Long Island Association of Professional Geologists and a Board Member of the New York State Council of Professional Geologists. We wish her many blessings in her administration and guidance of the Eastern Federation.

Please read the Minutes of the Annual EFMLS Meeting which took place at the Convention in Harrisburg on Saturday, September 15 (<http://www.amfed.org/efmls/efnov.12web.pdf>, page 5-9). Another interesting read in the November EFMLS News concerns insurance. The current rate is \$2.40 per member.

Many thanks to Ken Leap for his masterful presentation at the annual banquet on the history and mystery of making red glass. Ken is currently teaching Tuesdays and Thursdays at Glencairn Castle in Bryn Athyn and promised us a behind-the-scenes tour of their stained glass windows; call Mark or myself to sign up for this early 2013 trip. We will schedule when we know how many people are interested.

DVESS is supportive of, and closely aligned with, Sterling Hill Mining Museum and its wonderful fluorescent minerals. Come to the meeting Nov. 14 and hear fluorescent expert Dick Bostwick; and plan on attending the meeting December 14 for our annual holiday festivities including the election of next year's Executive Board. Bring a wrapped gift (@ \$15) and you will receive a wrapped gift – and yes, you can designate your gift for a specific person if you wish (someone asked that question last year).

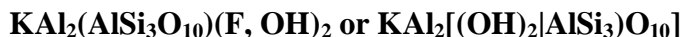
Many thanks and much appreciation goes to the Society Officers who have served so graciously during 2012. Some will be leaving office next month and others will just be switching hats; in either case, we gratefully acknowledge the many hours you give to this club to make its continued existence possible.

We hope you enjoy your Thanksgiving holiday. Your comments and questions are always welcome!

\* \* \* \* \*

## MICA

### Potassium Aluminum Silicate Hydroxide Fluoride



Step right up, folks and get a good look at "Delaware Muscovite Mica". It sparkles! It bends! It peels!

Today's word is **phyllosilicate**. Phyllosilicates are sheet silicate minerals, formed by parallel sheets of silicate tetrahedra ( $\text{Si}_2\text{O}_5$  - this is Silicon:Oxygen in a 2:5 ratio). It's found in all three rock types: igneous, sedimentary, and metamorphic and ranges from 2-2.5 on the [Moh's Hardness Scale](#).

Thin pieces of mica look clear, while thicker pieces appear silvery in color. It occurs in many layers, like leaves or pages in a book, and can be peeled into thin clear sheets; we can see it's almost perfect basal cleavage in one direction as we peel it. Due to mica's easy cleavage, it may found on the surface of the ground (the pumpkin patch at **Ramsey's Farm** in North Wilmington, DE is a good example) or buried beneath the earth in pegmatites or metamorphosed gneiss and schist; it's often associated with garnet, tourmaline and beryl. Often it becomes separated from its pegmatite matrix by erosion.

### WEBSITES -

another good location is <http://www.dgs.udel.edu/delaware-geology/woodlawn-quarry-geoadventure-delaware-piedmont>

Read the source article in full - [http://www.delminsociety.net/motm/motm\\_dec2007.shtml](http://www.delminsociety.net/motm/motm_dec2007.shtml)

Read about cleavage - [http://en.wikipedia.org/wiki/Cleavage\\_%28crystal%29](http://en.wikipedia.org/wiki/Cleavage_%28crystal%29)

Other - <http://www.dgs.udel.edu/delaware-geology/woodlawn-quarry-geoadventure-delaware-piedmont>

Read more about mica - <http://webmineral.com/data/Muscovite.shtml#.UHlp865TD8k>

Thank you to Ken Casey and the Delaware Mineralogical Society for this article which is taken from their "*Mineral of the Month – December 2007*" and can be seen in its entirety on their website at [http://www.delminsociety.net/motm/motm\\_dec2007.shtml](http://www.delminsociety.net/motm/motm_dec2007.shtml)

## Upcoming Shows & Events

**GEMARAMA**, sponsored by the Tuscarora Lapidary Society, Sat., Nov. 3, - 10am to 6pm and Sun., Nov. 4, - 10am to 5pm; theme: **PATTERNS GALORE**

**Location** - the School at Church Farm, 1001 E. Lincoln Highway, Exton, PA 19341. It is located ½ mile west of the Frazer - Rte. 30 exit off of Route 202. (Set your GPS unit to 1001 E. Lincoln Hwy, Exton, PA.) For a Google map [Click Here](#)

**Admission** - Admission is \$6 for adults, \$1 for children under 12 years of age; two-day adult tickets are \$9. Adult single day admission \$5 with [DISCOUNT COUPON](#). Boy Scouts and Girl Scouts in uniform and accompanied by an adult Scoutmaster are admitted free.

**Demonstrations, Children's table, Exhibit for the vision challenged, Silent Auction, Concession Stand**

For more information see [www.lapidary.org](http://www.lapidary.org).

**Nov. 7** - 7:30 p.m. "Ocean Exploration: Shore to Solar System and Beyond" Presented by Dr. Peter Rona, Professor of Marine Geology and Geophysics, Institute of Marine and Coastal Sciences, at Rutgers University - Assembly Room of Winants Hall, 7 College Avenue, New Brunswick, NJ.

Dr. Rona will discuss the ongoing exploration of the Hudson Submarine Canyon and ocean ridges and will discuss the implications for exploration of the solar system. He will also talk about his role in the making of the award winning IMAX film "Volcanoes of the Deep Sea."

A reception will follow at the Rutgers University Geology Museum.

To attend this event please RSVP to the museum at [848-932-7243](tel:848-932-7243) or at [museum@rci.rutgers.edu](mailto:museum@rci.rutgers.edu).

**Mar. 2-3, 2013**: 50th Annual Earth Science Gem & Mineral Show sponsored by the Delaware Mineralogical Society. Delaware Technical & Community College, Newark, DE.

## Centenary United Methodist Church Events

*our meeting location and "home" - paraphrasing Robert Frost:  
"the place where, when you go there,  
they always take you in."*

### **Two Days of Events to Commemorate World AIDS Day**

#### **Sat. Nov. 10**

6 pm covered dish dinner followed at 7:30 pm by a FREE concert featuring the Philadelphia Gay Men's Chorus. Refreshments will be served after the concert. Dinner and concert are free and everyone is welcome to attend.

#### **Sun., Nov. 11**

9 am service to commemorate World AIDS Day. Refreshments will be served afterward. Free and everyone is welcome to attend.

### **Centenary United Methodist Church**

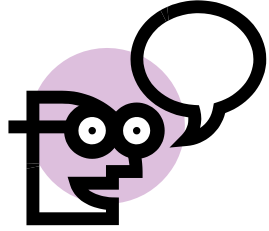
149 South White Horse Pike, Berlin, NJ 08009

is a dynamic and inclusive congregation

that welcomes everyone regardless of race, ethnicity, age,  
gender identity, sexual orientation, social or economic status,  
physical and mental ability, or religious affiliation.

We are all God's beloved children.

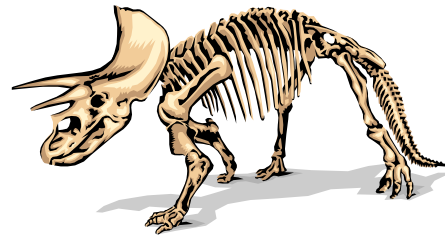
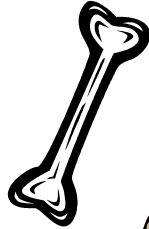
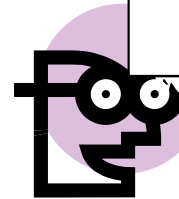
Do you think money buys happiness?



*It depends – money just buys stuff.  
Does stuff gives you happiness?*



**Not yet.**



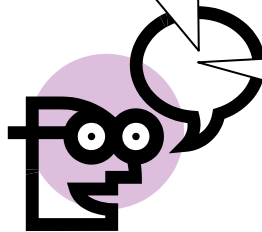
*Well, don't give up.  
You could be just one purchase away from total bliss!*



**That's what I thought the last time I bought a specimen!**

*At least you're making Gary happy!!*

**By giving him my money?**



***YEAH! So he can buy more minerals and fossils!!!***



## **Membership Information**

*Regular memberships* are entitled to participate in all DVESS activities.

*Sponsoring memberships* are entitled to the same plus a specially chosen mineral specimen. Dues are renewable each year in January.

### **Regular Membership:**

*\$15.00 for the 1st family member + \$5.00 for each family member*

*\$10.00 for the 1st Senior (65+ ) member + \$5.00 for each family member*

*\$10.00 for Rowan University Students with College ID*

### **Sponsoring Membership (each additional family member - \$5.00):**

“Silver” \$50.00 for 1<sup>st</sup> family member – receive a Geode Specimen

“Gold” \$75.00 for 1<sup>st</sup> family member – receive Native Gold Specimen

“Platinum” \$100.00 for 1<sup>st</sup> family member – receive Premium Specimen

## **Society Information**

The Delaware Valley Earth Science Society, Inc. (DVESS), a non-profit organization, was founded in 1956 and incorporated in the state of New Jersey in 1957. The Society:

- promotes interest in, knowledge of, and the development of skills in the “earth sciences.” These interests include mineralogy, paleontology, lapidary arts, archeology, and local preservation.
- supports the conservation of natural resources, advocates the availability of collecting sites, and maintains close contact with those in the academic field.
- is a member club of the Eastern Federation of Mineralogical and Lapidary Societies (<http://www.AmFed.org/EFMLS>)

### **Delaware Valley Earth Science Society Inc. (DVESS)**

P.O. Box 372

Maple Shade, New Jersey 08052

DVESS Website: <http://www.DVESS.org>



**DVESS 2012 Officers & Positions**

<p><b>President</b>  <b>Newsletter Editor</b>  <b>Special Events Coordinator</b>  <i>AnnLynne Benson</i>          609-458-7821 (c), 856-418-6121 (txt)          856-783-0969 (h)  <a href="mailto:SeleniteQueen@gmail.com">SeleniteQueen@gmail.com</a></p>	<p><b>Treasurer</b>  <b>Program Chair</b>  <i>Gary Weinstein</i>          (856) 234-0708 – Home          (856) 795-5077 – Work  <a href="mailto:garyskyrock@comcast.net">garyskyrock@comcast.net</a></p>
<p><b>1st Vice President</b>  <b>co-Field Trip Chair</b>  <i>Mark Leipert</i>  <a href="mailto:mark.leipert@yahoo.com">mark.leipert@yahoo.com</a></p>	<p><b>2nd Vice President</b>  <b>co-Field Trip Chair</b>  <i>Lou Detofsky</i></p>
<p><b>Jr. Rockhound Coordinator</b>  <b>Grades 2 – 8</b>  <i>Mil LeCompte</i>          609-458-7763, 856-889-4564  <a href="mailto:RocksandBadges@yahoo.com">RocksandBadges@yahoo.com</a></p>	<p><b>Jr. Rockhound Coordinator</b>  <b>Grades 9 - 12</b>  <i>Gerald Feigin</i></p>
<p><b>Secretary</b>  <i>Grant Elliott</i>          (856) 728-1731  <a href="mailto:gle@bellatlantic.net">gle@bellatlantic.net</a></p>	<p><b>Membership Chair</b>  <i>Carol DeCuzzi</i>          428-0621(h) 609-634-2570 (c)  <a href="mailto:decuzzic@comcast.net">decuzzic@comcast.net</a></p>
<p><b>Website Coordinator</b>  <i>Terry Wilson</i>  <a href="mailto:terry@dvees.org">terry@dvees.org</a></p>	

