

**DVESScapades**  
*escapades: interesting, stimulating, exciting activities and adventures*



**Delaware Valley Earth Science  
 Society Newsletter**



Delaware Valley Earth Science Society, Inc. ( DVESS )  
 P.O. Box 372 Maple Shade, N.J. 08052  
 DVESS Website : <http://www.dvess.org>

**Meeting: November 9, 2011**  
**Program: Don Miller (Fossil elephants)**

**President’s Message:** by AnnLynne Benson

CONGRATULATIONS to Ralph Thomas of the Rock & Mineral Club of Lower Bucks County! At the recent AFMS/EFMLS\* Convention in Syracuse, New York, Ralph received one of the most prestigious awards a member of any mineral club can receive – the Trophy award for the Each One Teach One category. This award honors a rockhound who has performed outstanding service to an individual club and the mineral collecting community at large. The GlowFather, as Ralph is affectionately known, has been rockhounding, teaching, and leading club activities – including the country’s premier fluorescent mineral show “Ultraviolation” - since before most of us were Pebble Pups.

You won’t want to miss **our Nov. 9 meeting! Don Miller – Mr. Teeth**, as I like to call him – will be our featured speaker. If you go to a gem, mineral and fossil show and see teeth for sale – they’re probably on Don’s table! Don is a really nice guy and a seasoned professional, counting among his credits Past President of the Delaware Valley Paleontological Society. Check out his website [www.MillersFossils.com](http://www.MillersFossils.com) before the meeting.

**BUS TRIP** to Washington, D.C. – Saturday, April 21, 2012 – Leaving from Centenary United Methodist Church, 149 South White Horse Pike, Berlin, NJ 08009 at 7:15 am and returning around 11 pm. You’ll have plenty of time to see museums and sights during the day and there will be drive-around tours in the morning and evening; lunch is on your own but dinner is included! Only \$60. !! Checks can be made payable to Centenary United Methodist Church, c/o Ann Benson, 59 Cedar Lane, Clementon, NJ 08021-3875. For more information call Ann at 856-783-0969.

<b>Inside this issue - November , 2011</b>	
Pres message	Pg 1
meeting minutes, trips	Pg 2
Places to go	Pg 2/3
Grandma	Pg 6
Society Info	Pg 7
Membership form	Pg 11
Code of Ethics	Pg 10
Society Directory	Pg 8

**WILDACRES WORKSHOP SCHOLARSHIPS** – In celebration of the 40th Anniversary of EFMLS Workshops at Wildacres Retreat, two scholarships are being offered - one for the spring and one for the fall session. Criteria for consideration will include active membership in an EFMLS member club, completion of an application form, and never having previously attended an EFMLS Wildacres Workshop. To find out more about the location, see <http://www.wildacres.org>; to find out more about the workshops, see <http://www.amfed.org/efmls/wildacres.htm>.

Wildacres is situated on 1600 acres at an elevation of 3,300 feet atop a mountain near the Blue Ridge Parkway in Little Switzerland, North Carolina. This year's sessions (7 days) cost \$350 per person including room, board and classroom instruction (plus a nominal fee to cover materials and supplies); completed projects can be taken home with you. The week at Wildacres is divided into two parts or "semesters". Students take one class lasting either the full week (4-days) or two different classes lasting 2-days each. The day between "semesters" is a day set aside to allow participants to explore the region and just relax. It doesn't get any better than that!!

**CLUB BROCHURES** – Please pick up one or two yellow club brochures and have them on hand in your vehicle or handbag to give out to folks. If you see a parent and child, strike up a conversation by asking, "Does your child like rocks or dinosaurs?" Offer them a club brochure; if they're not from our area, addresses and websites for the American Federation are on the back of the brochure. Your small gesture may make a world of difference to that child, his/her family, and to our club. New folks, especially kids, are the lifeblood of every club! If we want this club to continue providing us with speakers, activities and lots of fun, we MUST invest just a little bit of effort to get the word out.

**GEMARAMA** – If you get this newsletter in time, be sure to attend the Tuscarora Lapidary Society's 42nd Annual show "Out of Arica" at the Church Farm School in Exton, PA, Nov. 5 and 6. See [www.Lapidary.org](http://www.Lapidary.org) for a discount coupon.

Mark your calendar for next year - the Delaware Mineralogical Society's 49th Annual Earth Science Gem & Mineral Show at Delaware Technical & Community College, I-95, Exit 4B, Churchmans Rd (Rt 58) in Newark (Stanton), DE will be held March 3 & 4, 2012.

**The current issue of EFMLS News is available at** <http://www.amfed.org/efmls/efnov.11web.pdf>.

**QUOTE OF THE MONTH:** "You may be dis-appointed if you fail, but you are doomed if you don't try."

**MINUTES:** By Grant Elliott, Recording Secretary

Meeting was held at Centenary UM Church in Berlin, NJ.

Attendance: Gary Weinstein- Treasurer/Program Chair, AnnLynne Benson- Acting President/1st VP/Special Events Coordinator, Grant Elliott- Recording Secretary, Lou Detofsky- 2nd VP, and Mil LeCompte- Jr Rockhound Coordinator. Others present included Stu Cleveland, Mark Leifert, Lance Schnatterly, Evelyn Vickovich, Meredith Taylor, Susan Moore, James Brennan, and Robert Bartose. Ann gaveled the meeting to order at approximately 8:15pm.

DVESS Banquet: to take place at the Mandarin Buffet on October 16th. Magician/geologist/professor Dr. Steve Okulowitz presentation on Iceland volcanos

### **Future Programs:**

November- Don Miller (Fossil Elephants)

December- Xmas party/Gift Exchange/Election of Officers/Covered Dish Food

2012- Dick Bostwick, John Sanfacon, Randy Lyons among the possible speakers

### **Other Business:**

We will have to start thinking of the election of officers (December). Preliminary line up include Ann- President, Grant- Recording Secretary (Val- Backup Secretary), Gary- Treasurer, Mark- 1st VP, and Lou Detofsky- 2nd VP

### **Church News-**

October 8th Hoagie sale April 2, 2012 Washington DC bus trip- \$60 bus/dinner/tip

### **Saturday November 5th Sterling Hill Tour- Free to members**

Mel News- Mel will oversee 8 to 13 years of age Junior Rockhounds, while Gerald Feigin has

volunteered for the 14 to 18 age group.

Lou Detofsky made his presentation on "Geology of the Caribbean". Lou regaled us with his experiences in the Caribbean and the geological history of the region.

Evelyn won door prize Exec will on October 23, 2011 at Ann's house. November at Lou's house.

Meeting concluded at approximately 9:45pm. Gary, Grant, and Ann repasted at the Palace Diner thereafter.

Future Programs:

December- Xmas party.

Meeting concluded at approximately 9:30pm. Some members then repasted at the Pallas Diner.

### **BANQUET TIME!!!!**

Our annual banquet was held on Sunday, October 16, 2011 from 1 pm – 5 pm at the Mandarin Buffet restaurant at "Ellisburg Circle" in Cherry Hill – intersection of Rt. 70 and Kings Hwy. Our speaker was the noted and well appreciated magician/geologist and professor Dr. Steve Okulowitz. A fun time was had by all, well 'stuffed' and awed by Iceland's geology.

### **ANNUAL <<FREE>> STERLING MINE TOUR**

Saturday Nov. 5, 2011 Car pool arrangements will be made at the Oct. 12 meeting; call if you are unable to attend the meeting and need a ride. Feel free to journey on your own. Tour start time is 1 pm. You may collect prior to the tour for the usual \$5. fee plus \$1.50 per lb.

### **JUNIOR ROCKHOUNDS**

Mel and Gerald will each have a class: ages 8 to 13 with Mel and 14 to 18 with Gerald. Each class is limited to 10 kids.

December is our annual holiday party/ gift exchange and election of next years officers. The club will supply a cold cut platter, rolls, etc., coffee, tea and sodas. We would ask that members please bring a covered dish, salad item or desert to share to round out the festive fare. Bring a wrapped gift (suggested value about \$10.00) and receive another surprise in return. (Should be hobby related).

Election of next years officers: Yes it is that time again. The selection committee has opened the floor for nominations and volunteers to help run the club in the future. So far the slate of persons running ( read "Coerced") is; President- Ann Benson; 1st V.P.- Mark Leipert; 2nd V.P.- Lou Detofsky; Secretary- Grant Elliot; Treasurer- Gary Weinstein

We are thankful to Mark for stepping forward this year as all the other officers above have served many terms in the past and we need some new blood to step up occasionally. Also thanks go to Val Korsniak who volunteered to be back up Secretary or as we like to call it "scribe in waiting".

**For your further travel pleasure, consider the following fun places to go...**

**November:**

We are set to go for Saturday Nov. 5, 1 pm tour, collecting in the morning if we get there early enough (\$5. entrance, \$1.50 / lb unless we find out differently - maybe we should not have to pay the \$5.?). I signed up for 15 people (that can increase to 15 adults plus kids if necessary).

<http://sterlinghillminingmuseum.org/> Ann Benson - President/Special Events Coordinator

**November:**

**5 - 6:** 7<sup>th</sup> Annual Rock & Gem Show sponsored by the Penobscot Mineral & Lapidary Club. Brewer Auditorium, Brewer, ME.

**12-13,2011 - Fairfax, VA - 20th Annual Gem, Mineral & Fossil Show Northern Virginia Mineral Club (VA) George Mason University, Student Union Bldg., Rte 123 & Braddock Rd., Fairfax, VA Contact: Jim Kostka @ [jkostka@juno.com](mailto:jkostka@juno.com)**

**19, 2011 – Fairless Hills, PA – Leidy Microscopical Society Regular Meeting at the Northminster Presbyterian Church 7:30 PM. The topic is “The Leonard Morgan Collection Part II” by Chuck O’Loughlin. Please bring examples and scopes. All are welcome.**

**19-20, 2011 – Lebanon, PA – Gem & Mineral Holiday Festival, Mid Atlantic Gem & Jewelry Association, Lebanon Expo Center, Rout 72 & Rocherty Road, Minerals and Gems.**

**19-20:** 45<sup>th</sup> Annual Gem, Mineral, Jewelry, Bead & Fossil Show sponsored by the Gem & Mineral Society of the Beaches 45th annual gem, mineral, jewelry, bead and fossil show. Americraft Expo Center East (South Florida Fairgrounds Expo Center East), 9067 Southern Blvd., West Palm Beach Florida 33411. Admission \$7, children under 12 free. Visit website for \$1 off coupon. [www.gemandmineral.cc](http://www.gemandmineral.cc). ; Saturday (Nov. 19th) 9am-6pm, Sunday (Nov. 20<sup>th</sup>) 10am-5pm. Free Parking, door prizes, hourly prize drawings, Scholarship fund raffle, Fossil Dig, Gem Mining, Geode Cracking, Displays, Demonstrations. For further information contact show chairman, Barbara Ringhiser, at [bar5678@aol.com](mailto:bar5678@aol.com)

Keith Johnson is the director of Rowan University's Edelman Planetarium. The current planetarium show, “Black Holes: The Other Side of Infinity” will be playing on Sunday afternoons at 3 p.m. through Nov. 20. This presentation is open to the public; a small admission fee is charged. More information is available at [www.rowan.edu/planetarium/](http://www.rowan.edu/planetarium/)

[http://www.nj.com/gloucester/voices/index.ssf/2011/10/south\\_jersey\\_skies\\_a\\_real\\_tato.html](http://www.nj.com/gloucester/voices/index.ssf/2011/10/south_jersey_skies_a_real_tato.html)

**25-27:** 32<sup>nd</sup> Annual Roanoke Valley Mineral & Gem Show sponsored by the Roanoke Valley Mineral & Gem Society. Salem Civic Center, 1001 Roanoke Blvd; Salem, VA.

**26-27, 2011 – Morristown, NJ – Rock & Mineral Weekend at the Morris Museum, by The Morris Museum Mineralogical Society, 6 Normandy Heights Road, Saturday 10:00 AM to 5:00 PM, Sunday 1:00 PM to 5:00 PM, Admission \$10.00 per adult, \$7.00 per child, Members are free. Includes demonstrations, displays, and programs. For more information call 973-971-3718.**

**April 21, 2012 - Washington, DC – The Centenary United Methodist Church, 149 South White Horse Pike, Berlin, NJ 08009 will sponsor a bus trip to Washington, DC. This will be a drop-off and pick-up trip (not a tour). There will be a stop for dinner (at your own expense) on the way home. Checks can be made payable to Centenary United Methodist Church, c/o Ann Benson, 59 Cedar Lane, Clementon, NJ 08021-3875. For more information contact club member Ann Benson Phone: 856-783-0969.**



For the group, on how to do items, page other give em a try items...! for kids adults ect, Peace Mel...!

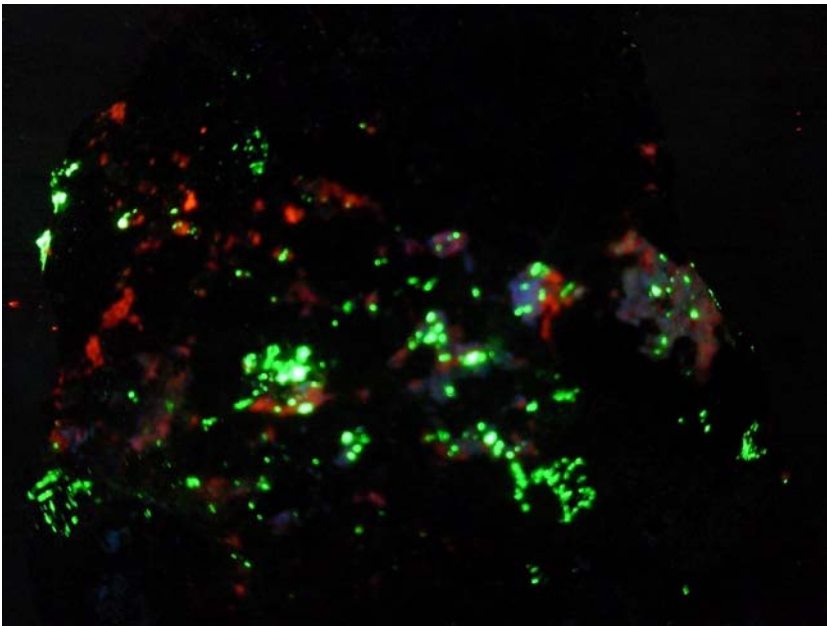
[http://www.ehow.com/how\\_6462889\\_make-liquid-bluing-coal-crystals.html](http://www.ehow.com/how_6462889_make-liquid-bluing-coal-crystals.html)

also a pic or two, ok 3 first 2 are the same specimen a parker special, I do love 5 n 6 color items... .Margarosanite is Beautiful..+++++++ nice to find a old specimen I collected as a kid an knew not what I had, but still have, as I go thru buckets I collected from early 70's to early 80' It sure is Nice to be a Rockhead.. Peace All

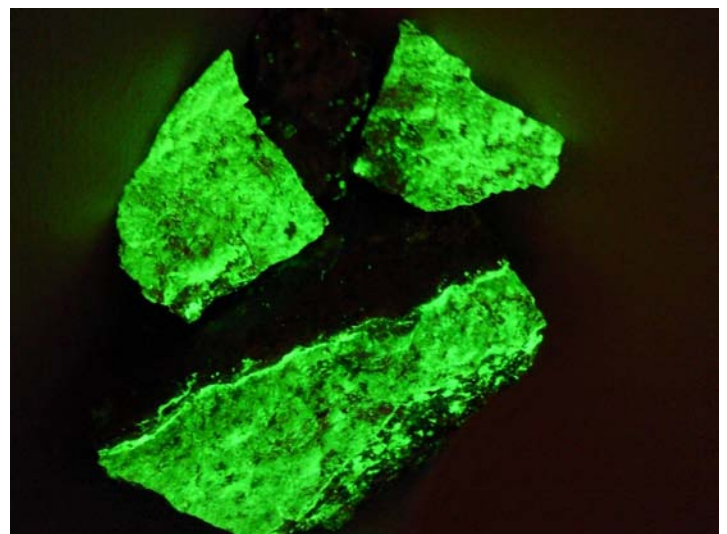


Happy Halloween,

The willy, above, is a specimen from the upper tour, off belt, was basically NF but split/cracked the buggar on a fine vein and got a few pieces that ended up with pieces below that now make my Halloween smile Pic...! ENJOY.  
From Rockhead-SFB



3<sup>rd</sup> pic from Rockhead-SFB



## Heard every thing????



### Moonrock-Peddling Grandma Feels the Cold Hand of the Interplanetary Police

The warrant for Davis's arrest sports a snapshot of the contraband — a paperweight containing a fleck of the moon.

The zany world of [moonrock theft and recovery](#) has produced some of the stranger science-related stories in recent years — you know, like “[NASA interns steal safe of moonrocks and spread them on hotel bed to have sex amongst them](#)” strange. The case of the grandma apprehended by federal agents in a Riverside County Denny's with a moonrock paperweight, explored at length in [an AP exclusive](#), is a fitting entry in this pantheon of interplanetary skulduggery. To make some extra cash, Joann Davis, 74, the widow of a contractor who worked with NASA during the Apollo moon mission era, decided to find an online buyer for a tiny moon fragment she says her husband received as a gift from Neil Armstrong (Armstrong has denied giving anyone such lunar souvenirs). It's illegal to sell Apollo moonrocks, which are all US government property and thus can't be used to turn a profit. Davis apparently had a hard time finding taker for the plastic-encased shard, because she ultimately emailed NASA to ask if they had any tips on selling the things. “I've been searching the internet for months attempting to find a buyer,” Davis wrote in May, the [AP reports](#). “If you have any thoughts as to how I can proceed with the sale of these two items, please call.”

Let me just give you a pointer, reader: when selling contraband, don't contact the people it came from. They will probably want to make your acquaintance in the very near future.

So NASA set up a sting operation and had an agent contact her about buying the object. Davis apparently knew that selling moonrocks was not kosher, because according the warrant for her arrest, she told the buyer (aka a NASA agent) that she was willing to sell it for “big money underground” and referenced the black market. After closing the deal for \$1.7 million, Davis headed to a Denny's in Southern California for the handoff—and was shocked to find herself suddenly swarmed by federal agents who confiscated the moonrock. She told the AP that they also bruised her when they pulled her from her booth and scared her so much she peed her pants.

Oddly enough, it's now been five months since the fateful events in the Denny's, and Davis hasn't been charged with a crime, nor has NASA given any inkling of whether they'll move the case forward. The moonrock, however, remains in their possession.

Image courtesy of U.S. District Court for the Central District of California, via [AP](#)

## DVESS MEETING LOCATION :

### DIRECTIONS:

From Atco (west-bound), after the traffic light at Taunton Ave. (Rite Aid drugstore on the left), the church is about the 3rd building on the right; turn into the first driveway. If you miss it, pass by the church and turn Right onto Broad St. (at the Berlin Diner) then turn Right into the parking lot of the Baptist Church and go straight all the way - the parking lots of both churches connect.

From Rt. 73 in Marlton: head East (South) on Rt. 73. As you enter Berlin, you will pass Wal-Mart (on the left) and a shopping center (on the right) with Shop Rite and Staples. **Get into the Right "Exit Only" lane and follow the signs for Cross Keys Rd. At the intersection of Cross Keys Rd. and the White Horse Pike (Rt. 30) turn LEFT. At the next intersection (Broad St.) continue straight past the Berlin Diner and SPEEDY MART on your left; pass by 2 or 3 white storefronts on the left then see the big white church with red front doors on your left. Pass in front of the church and turn into the driveway on the far side. Education Building is behind the church.**

From Lindenwold or Clementon on the White Horse Pike (east-bound):

As you enter Berlin business district, you will pass through the traffic light at Cross Keys Rd. (CVS Pharmacy on right corner). Follow highlighted directions above.

### MEMBERSHIP INFORMATION

Regular members are entitled to participate in all DVESS activities. Sponsoring members are entitled to the same plus a specially chosen mineral specimen. Dues are renewable each year in January. Membership rates for the Society:

#### Regular Membership:

\$15.00 for the 1<sup>st</sup> family member + \$5.00 for each additional family member

\$10.00 for the 1<sup>st</sup> Senior ( 65+ ) member + \$5.00 for each additional family member

#### Sponsoring Memberships ( each additional family member - \$5.00 ):

*"Silver"* \$50.00 for 1<sup>st</sup> family member - receive a Geode Specimen

*"Gold"* \$75.00 for 1<sup>st</sup> family member - receive a Native Gold Specimen

*"Platinum"* \$100 for 1<sup>st</sup> family member - receive a Premium Specimen

### SOCIETY INFORMATION

The Delaware Valley Earth Science Society, Inc., ( DVESS ), a non-profit organization, was founded in 1956 and incorporated in the state of New Jersey in 1957.

#### The Society:

- \* promotes interest , knowledge and the development of skills in the "earth sciences". These interests include mineralogy, paleontology, lapidary arts, archeology and local preservation.
- \* supports the conservation of natural resources, advocates the availability of collecting sites and maintains close contact with those in the academic field.
- \* is a member club of the Eastern Federation of Mineralogical and Lapidary Societies ( <http://www.AmFed.org/EFMLS> )

### MEETINGS

The Society meets the 2<sup>nd</sup> Wednesday of each month throughout the year at Centenary United Methodist Church, 151 South White Horse Pike, (route 30) in Berlin. Junior Rockhounds meet at 7:30pm with the regular meeting beginning around 8 pm.

Anyone with info for the newsletter please share with me. You can be published!

Stuff you did in school, on a trip etc., see my info below ( next page ).

Editor's Notes: Editor is not responsible for authenticity of information in any articles submitted for publication. Nor are the opinions expressed in the "DVESScapades" necessarily those of the officers of the Delaware Valley Earth Science Society, Inc., and/or the editor.

**AFMS CODE OF ETHICS (American Federation of Mineralogical Societies)**

- I will respect both private and public property and will do no collecting on privately owned land without the owner's permission.
- I will keep informed on all laws, regulations of rules governing collecting on public lands and will observe them.
- I will to the best of my ability, ascertain the boundary lines of property on which I plan to collect.
- I will use no firearms or blasting material in collecting areas.
- I will cause no willful damage to property of any kind - fences, signs, buildings.
- I will leave all gates as found.
- I will build fires in designated or safe places only and will be certain they are completely extinguished before leaving the area.
- I will discard no burning material - matches, cigarettes, etc.
- I will fill all excavation holes which may be dangerous to livestock.
- I will not contaminate wells, creeks or other water supply.
- I will cause no willful damage to collecting material and will take home only what I can reasonably use.
- I will practice conservation and undertake to utilize fully and well the materials I have collected and will recycle my surplus for the pleasure and benefit of others.
- I will support the rockhound project H.E.L.P. (Help Eliminate Litter Please) and will leave all collecting areas devoid of litter, regardless of how found.
- I will cooperate with field trip leaders and those in designated authority in all collecting areas.
- I will report to my club or Federation officers, Bureau of Land management or other authorities, any deposit of petrified wood or other materials on public lands which should be protected for the enjoyment of future generations for public educational and scientific purposes.
- I will appreciate and protect our heritage of natural resources.
- I will observe the "Golden Rule", will use "Good Outdoor Manners" and will at all times conduct myself in a manner which will add to the stature and Public "image" of rockhounds everywhere.

<b><u>DVESS Directory 2011</u></b>	<b><u>President</u></b> <b><u>Ann Lynne Benson</u></b> <b><u>see next box for info</u></b>
<b><u>1<sup>st</sup> Vice President</u></b> <b><u>Ann Lynne Benson</u></b> <b><u>856-783-0969</u></b> <b><u>SeleniteQueen@gmail.com</u></b>	<b><u>2<sup>nd</sup> Vice President</u></b>
<b><u>Jr. Rockhound Coordinator</u></b> <b><u>Mel LeCompte</u></b> <b><u>856-783-0969</u></b> <b><u>works-in-faith@comcast.net</u></b>	<b><u>Recording Secretary</u></b> <b><u>Grant Elliott</u></b> <b><u>856-728-1731</u></b> <b><u>gle@verizon.net</u></b>
<b><u>Website Coordinator</u></b> <b><u>Terry Wilson</u></b> <b><u>609-714-1309</u></b> <b><u>terry@dveess.org</u></b>	<b><u>Special Events Coordinator</u></b> <b><u>Ann Lynne Benson</u></b> <b><u>856-783-0969</u></b> <b><u>SeleniteQueen@gmail.com</u></b>
<b><u>Treasurer and Program Chair</u></b> <b><u>Gary Weinstein</u></b> <b><u>856-234-0708 - home</u></b> <b><u>856-795-5077 - wk</u></b> <b><u>garyskyrock@hotmail.com</u></b>	<b><u>DVESS Newsletter Editor, Membership Chair</u></b> <b><u>Carol De Cuzzi</u></b> <b><u>856-428-0621 - home</u></b> <b><u>decuzzic@comcast.net</u></b> or <b><u>DVESS@int-pro.com</u></b>



**Membership Form**

**Start w/ first family member (designated as head of family) Juniors must have an adult head of family with the Junior as the additional family member for insurance purposes.**

First Name: \_\_\_\_\_

Last Name: \_\_\_\_\_

Address: \_\_\_\_\_

City: \_\_\_\_\_

State: \_\_\_\_\_

ZIP+4 \_\_\_\_\_

Phone: \_\_\_\_\_

Email: \_\_\_\_\_

Cell Phone: \_\_\_\_\_

Profession, School or Major Work  
\_\_\_\_\_

Okay to let other members of the Club see your email and other orange-starred information (on website)?

Okay to share \_\_\_\_\_  
Do NOT share \_\_\_\_\_

Newsletter Delivery ONLY via e-mail

additional family members to be registered w/ above member

Type of membership Regular Membership:  
\$15.00 for the 1<sup>st</sup> family member + \$5.00 for each additional family member  
\$10.00 for the 1<sup>st</sup> Senior ( 65+ ) member + \$5.00 for each additional family member  
Dues are collected on a calendar year Jan to Dec, no pro-rata rates  
additional members on another paper if needed

First Name: \_\_\_\_\_  
Last Name (only if different from above) \_\_\_\_\_  
\_\_\_\_\_  
First Name: \_\_\_\_\_  
Last Name (only if different from above) \_\_\_\_\_  
\_\_\_\_\_  
First Name: \_\_\_\_\_  
Last Name (only if different from above) \_\_\_\_\_  
\_\_\_\_\_

Sponsoring Memberships ( each additional family member - \$5.00 ):  
"Silver" \$50.00 for 1<sup>st</sup> family member - receive a Geode Specimen  
"Gold" \$75.00 for 1<sup>st</sup> family member - receive a Native Gold Specimen  
"Platinum" \$100 for 1<sup>st</sup> family member - receive a Premium Specimen

Interests: Minerals \_\_\_ Fossils \_\_\_ Lapidary \_\_\_ Collecting \_\_\_ Museum Trips \_\_\_  
Trotter \_\_\_ Sterling Hill \_\_\_ other, please list \_\_\_\_\_

How did you learn of DVESS? \_\_\_\_\_

Comments \_\_\_\_\_

What NON-DVESS interests or hobbies do you have? Would you be willing to share with our members?  
\_\_\_\_\_

What would you like the club to do or provide for you? \_\_\_\_\_

Delaware Valley Earth Science Society, Inc. ( DVESS )  
P.O. Box 372  
Maple Shade, N.J. 08052  
DVESS Website : <http://www.dvess.org>

RETURN SERVICE REQUESTED



6/15/2011

D V E S S  
W O R D D P U Z Z L E

# 40

b	y	E	d	L	o	v	e	I	a	n	d				
A	G	A	T	E	N	T	F	T	S	Y	H	T	E	M	A
E	T	I	R	U	Z	A	U	T	U	N	I	T	E	R	L
B	A	R	I	T	E	Z	A	R	A	T	I	T	E	T	A
E	P	E	T	I	L	A	H	P	J	C	O	F	S	P	T
T	E	T	I	N	O	C	U	A	L	G	S	G	Y	E	S
I	T	I	A	Q	U	A	M	A	R	I	N	E	N	A	Y
S	I	D	O	P	O	I	H	C	A	R	B	I	T	P	R
O	N	A	H	A	E	C	S	V	F	O	L	G	Z	O	C
M	A	R	X	T	I	E	E	R	R	A	O	R	M	P	P
A	M	D	F	R	S	N	A	N	M	O	R	A	H	Y	
P	K	N	U	T	T	N	I	R	S	B	D	O	R	Y	R
A	C	A	E	U	K	T	U	S	J	E	S	W	L	L	I
T	A	E	R	L	E	O	E	S	I	R	T	A	P	I	T
I	H	I	I	S	T	V	A	R	A	G	O	N	I	T	E
T	N	N	A	O	D	B	E	L	E	M	N	I	T	E	F
E	A	M	A	Z	O	N	I	T	E	L	E	U	S	X	O

GLAUCONITE	AZURITE
MARLPITS	AVENTURINE
HACKMANITE	AUTUNITE
ROWAN	AURICHALCITE
PYRITE	ARAGONITE
HALITE	AQUAMARINE
FRANKLIN	APOPHYLLITE
DVESS	APATITE
CRYSTAL	ANDRADITE
BRACHIOPOD	AMOSITE
BORNITE	AMETHYST
BLOODSTONE	AMBER
BELEMNITE	AMAZONITE
ZARATITE	AGATE
TOURMALINE	
BARITE	