

DVESScapades

escapades: interesting, stimulating, exciting activities and adventures



DELAWARE VALLEY EARTH SCIENCE SOCIETY NEWSLETTER



> founded in 1957 <

Next Meeting: October 9th, 2013

Program: Dr. Louis Detofsky, "Geology of the Mediterranean"

Location: Education Bldg. behind Centenary United Methodist Church
149 South White Horse Pike, Berlin NJ 08009

Program Schedule

October Banquet - Dr. Stephen Okulewicz. The banquet will be held at the **Scotland Run Golf Club, located at 2626 Fries Mill Road in Williamstown, NJ**. The banquet starting time is 3:00

November - John Ferrante, "History of Micromounting and the Leidy Microscopical Society"

December - Holiday Party with DVD, gift exchange, food and elections.

President's Message: By Mark Leipert, President

Annual Sterling Hill Mine Tour – September 21st: Our maiden voyage, using the Baptist Church's fifteen passenger van, was a big success. Mel and I took turns driving. It was a beautiful day and the rain held off until we returned at the Centenary Church. We had a total of eleven members attend an adventure packed day at the Sterling Hill Mine complex. Those in attendance included Susan Moore, Sue Van Cola, Mel LeCompte, Jim Lawless, myself, as well as new members Ryan Bower, Karl and Kaden Markiewicz, Lisa Denmark, Sam Johnson and Irene Shandruk. First, we went into the Trotter Tunnel Tour lead by Mel. We also saw a mining site replica made up of materials and mining equipment found on the property. We then proceeded to collect mineral specimens from within the open quarry area. I managed to hobble around the site on crutches, which was no easy task. Jim encountered some medical issues and could not continue with the rest of the group. Mel gave several members of our club as well as the Central Jersey Mineral club a tour of the "upper mine works" while the rest of us got a tour of the Mining Museum from Jeff Winkler. This was then followed by a tour of the Fluorescent Museum, which was really spectacular. Later in the afternoon, Jeff Winkler gave us a guided tour of the Sterling Hill Mine. Jeff also led us on a once-in-a-lifetime tour of the Grizzley, which is not open to the public. The Grizzley was a section of the mine in which all the mineable material was removed and backfilled with fill material. It was definitely a challenge doing both the Sterling Mine Tunnel and the Grizzley on crutches but it was worth it. Overall it was one of our most successful trips to the Sterling Hill Mine complex and I think everyone was exhausted. Special thanks to Jeff Winkler and the rest of the Sterling Hill Staff.

Community Day at the Inversand Marl Pit, Sewell, NJ - September 28th: Drexel University in collaboration with Mantua Township sponsored the Second Annual Mantua Dig Day. Inversand Company, Mantua Township and Drexel University are working on a proposal to create a fossil museum and educational field site at the location. Sue VanCola, Amanda Lewis-Hartley and I volunteered our service to help with various aspects of the event, including tour guides, fossil identification, answering questions on fossils, networking and getting dirty down in the pit. The weather was absolutely fantastic. Over 800 plus people showed up to learn about and dig up some fossils. This was also a great opportunity for our club to get our name and information out to the public.

DVESS Annual Banquet, Sunday, October 13th: As many of you know by now the Mandarin Restaurant has been closed so we needed to find a new location to hold this year's banquet. Ann, Gary and Mark have been working feverishly to secure a new location where we can have our banquet, door prizes and our feature presentation by Dr. Steve Okulewicz - magician and geology professor. The banquet will be held at the **Scotland Run Golf Club, located at 2626 Fries Mill Road in Williamstown, NJ**. The banquet starting time is 3:00 and will wrap up around

6:00? If you are planning on going please send an email to mark.leipert@yahoo.com or SeleniteQueen@gmail.com or garyskyrock@hotmail.com . We need to get a count on the number of people that are planning on attending. A menu will be posted at this Wednesday's meeting. I will also try to post it to yahoo groups following the meeting. The cost of the meal and drink is approximately \$15.00. Dessert is extra. For directions and more information go to www.scotlandrun.com.

Sunday, October 20th, Mineral Collecting Trip: Details will be provided at the October 9th meeting. If you are interested in attending please sign up at the meeting. We are still narrowing down the possibilities.

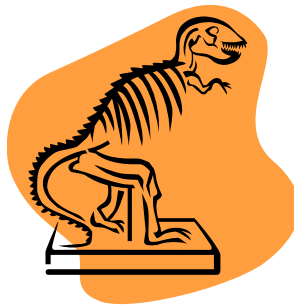


News

Geologists take drill to Petrified Forest in Arizona

They will obtain a core by drilling half a kilometer into rock more than 200 million years old. It is hoped that it will help them develop a complete picture of most of the middle and late Triassic period.

http://www.nature.com/news/geologists-take-drill-to-triassic-park-1.13866?WT.ec_id=NATURE-20131003

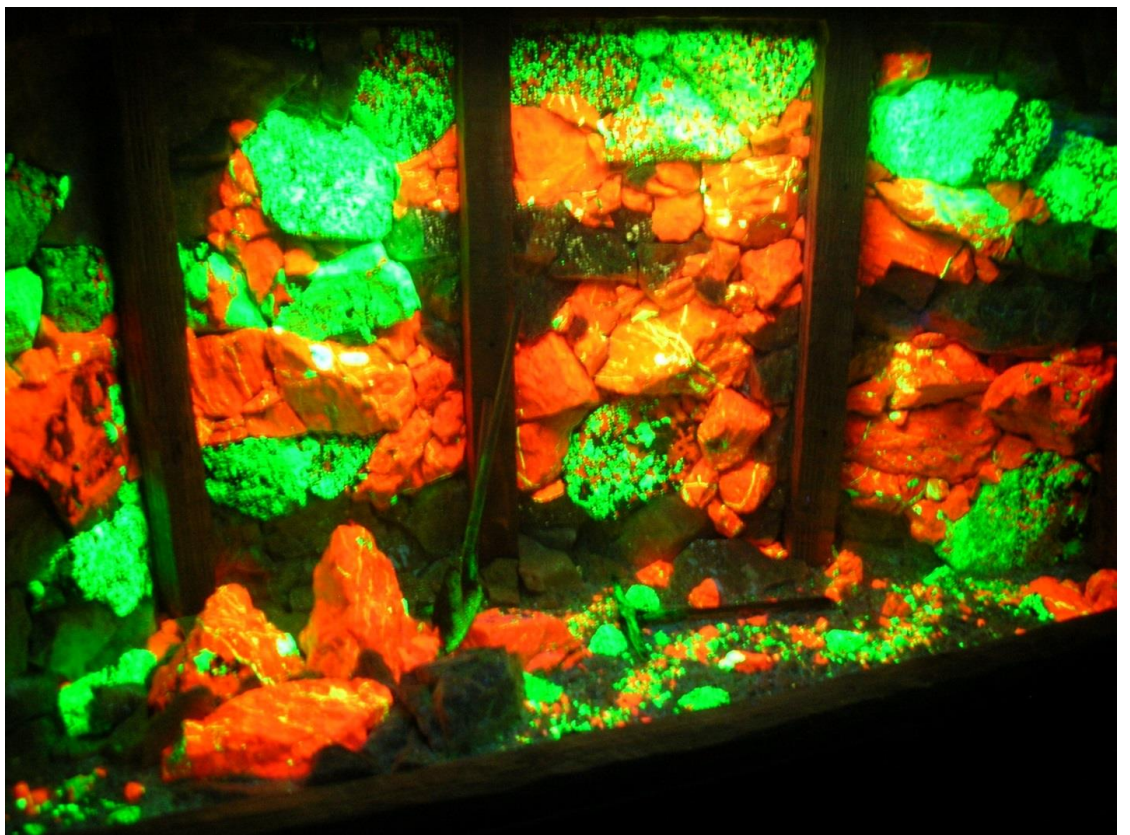


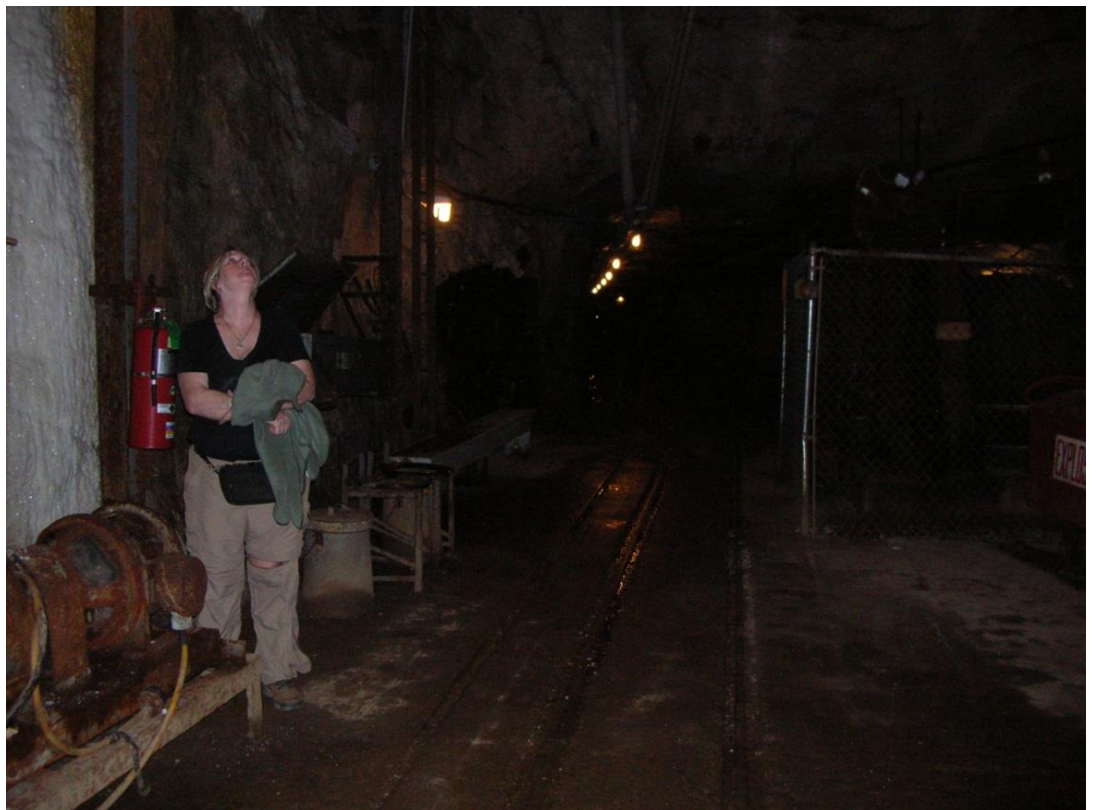
Field Trip Photos

Annual Sterling Hill Mine Tour, September 21st









Upcoming Field Trips

October 27th (Sunday) – Mineral Collecting Trip - TBD

Lou's Grand (Coastal Geology) Tour – postponed from October 2013 to Spring 2014.

Shows and Events

October

October 13th – Annual Club Banquet at **Scotland Run Golf Club** - featuring Magician/Geologist/Professor Dr. Steve Okulewicz presentation.

October 13–19 – Earth Science Week 2013 promotes awareness of the many exciting uses of maps and mapping technologies in the geosciences. <http://www.earthsciweek.org/>

New Jersey State Museum Upcoming Events

Join us for FALL FAMILY FUN DAYS:

Earth Science Week Kick-off Event

October 13

11:00 am to 3 pm

The New Jersey State Museum is proud to celebrate Earth Science Week. Visit the Museum to learn about earth science as seen in our natural history collections. Meet expert paleontologists, make crafts and do activities, and see our newest addition to the collection, a juvenile mastodon skull. Hear how it was found and what it tells us about these large extinct creatures.

National Fossil Day

October 16

12:00 pm

Join Curator David Parris to explore the exhibit, Natural History Highlights and hear about the juvenile mastodon skull discovered in Monmouth County.

International Archaeology Day

October 19

10:00 am to 4:30 pm

It's a full day of activities for all ages! Older kids and adults can experience tours of the New Jersey's Original People exhibit, curatorial talks focused on archaeology in New Jersey, and a film about archaeology. Kids of all ages can participate in a pottery "reconstruction" activity, a scavenger hunt, and a sandbox archaeology program. Everyone will enjoy speaking with experts at a prehistoric artifact identification table.



Halloween Spooktacular at the New Jersey State Museum

October 26

11:00 am to 3:00 pm

Celebrate Halloween with a day of fun activities at the museum. Visit the Riverview Court to make and take crafts inspired by New Jersey's spooky history. Join us in the auditorium at 1:00 for the FREE performance of The Legend of Sleepy Hollow by TSF Productions, a part of Encore Performing Arts, Inc. Don't forget to come in costume and sign up for our costume contest! The contest will be held immediately following the show in the Museum auditorium. Every child will have the opportunity to parade across the stage and show off their costume creations. Prizes will be awarded in 3 age categories. Plan to stay for a FREE showing of Sea Monsters in the Planetarium at 3:00.

October 26 – The Rock and Mineral Club of Lower Bucks County, PA presents our Annual “ULTRAVIOLATION” an all Fluorescent Mineral Show, at the First United Methodist Church, 840 Trenton Road, Fairless Hills, PA. Information contact Chuck O’Loughlin: ultraviolation@yahoo.com

November

November 2–3 – Exton, PA - 44th Annual Gemarama 2013: "Shades of Red" sponsored by the Tuscarora Lapidary Society. The School at Church Farm, Business Rte. 30, 1 / 2 mile west of Frazer Rte 30 exit off Rte. 202, Exton, PA.

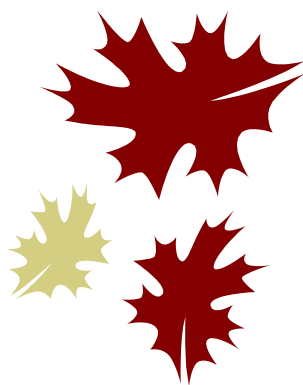
March 2014

March 8–9 – Clifton, NJ - 25th Annual Clifton/North Jersey Gem & Mineral Show, Sponsored by the North Jersey Mineralogical Society. 10am - 5pm at The Pope John Center, 775 Valley Road, Clifton, NJ

March 29–30: Plymouth Meeting, PA - Annual MINERAL TREASURES + FOSSIL FAIR show and sale, Plymouth Meeting, PA. Presented by The Philadelphia Mineralogical Society, The Delaware Valley Paleontological Society with The Eastern Federation of Mineralogical & Lapidary Societies' Annual Convention. LuLu Temple, 5140 Butler Pike, Plymouth Meeting, PA. Sat. 10am - 5pm Sun. 10 - 4. Adults - \$5.00; Kids under 12 \$1.00. Scouts in uniform free. Fossils, Minerals, Gems, Speakers and Exhibits. Learning Activities include a Fossil Dig and a Kid's Mineral Corner. www.philamineralsociety.org

Quote of the Month

"No Geologist worth anything is permanently bound to a desk or laboratory, but the charming notion that true science can only be based on unbiased observation of nature in the raw is mythology. Creative work, in geology and anywhere else, is interaction and synthesis: half-baked ideas from a bar room, rocks in the field, chains of thought from lonely walks, numbers squeezed from rocks in a laboratory, numbers from a calculator riveted to a desk, fancy equipment usually malfunctioning on expensive ships, cheap equipment in the human cranium, arguments before a road cut." *Stephen Jay Gould*



Websites of the Month

American Federation <http://www.amfed.org/>

Eastern Federation <http://www.amfed.org/efmls/>

New Jersey State Museum <http://www.nj.gov/state/museum/index.html>

Sterling Hill Mining Museum <http://sterlinghillminingmuseum.org/>

Delaware Museum of Natural History <http://www.delmnh.org/>

American Museum of Natural History <http://www.amnh.org/>

Earth Science Week <http://www.earthsciweek.org/>

Club Brochures

Please pick up one or two yellow club brochures and have them on hand in your vehicle or handbag to give out to folks. If you see a parent and child, strike up a conversation by asking, “Does your child like rocks or dinosaurs?” Offer them a club brochure; if they’re not from our area, addresses and websites for the American Federation are on the back of the brochure. Your small gesture may make a world of difference to that child, his/her family, and to our club.



Membership Information

Regular memberships are entitled to participate in all DVESS activities.

Sponsoring memberships are entitled to the same plus a specially chosen mineral specimen. Dues are renewable each year in January.

Regular Membership:

\$15.00 for the 1st family member + \$5.00 for each family member

\$10.00 for the 1st Senior (65+) member + \$5.00 for each family member

Sponsoring Membership: (each additional family member - \$5.00)

“Silver” \$50.00 for 1st family member – receive a Geode Specimen

“Gold” \$75.00 for 1st family member – receive Mineral Specimen

“Platinum” \$100.00 for 1st family member – receive Premium Specimen



Delaware Valley Earth Science Society Information

The Delaware Valley Earth Science Society, Inc. (DVESS), a non-profit organization, was founded in 1956 and incorporated in the state of New Jersey in 1957. The Society:

- promotes interest in, knowledge of, and the development of skills in the “earth sciences.” These interests include mineralogy, paleontology, lapidary arts, archeology, and local preservation.
- supports the conservation of natural resources, advocates the availability of collecting sites, and maintains close contact with those in the academic field.
- is a member club of the Eastern Federation of Mineralogical and Lapidary Societies (<http://www.AmFed.org/EFMLS>)

Delaware Valley Earth Science Society Inc. (DVESS)

P.O. Box 372

Maple Shade, New Jersey 08052

DVESS Website: <http://www.DVESS.org>



To submit an article or photos for publication in the DVESScapades, contact the Newsletter Editor at aquamarinepaisleyorchid@yahoo.com. Tell us about your latest collecting trip or share some photos with us!

