

DVESScapades

escapades: interesting, stimulating, exciting activities and adventures



DELAWARE VALLEY EARTH SCIENCE SOCIETY NEWSLETTER



September, 2014

Next Meeting: September 10th

Program: "Mining in Peru (Or how I learned to breathe at 15,000 feet elevation and why I had to learn Spanish or die)" by Dr. Robert Kamilli



Bring a hand-lense, if you have one, for a better view of some specimens from Peru

Meeting location: Education Bldg. behind Centenary United Methodist Church,
149 South White Horse Pike, Berlin NJ 08009

Program Schedule:

October - Mr. John Perozzi will show us sharks teeth he collected in North Carolina and tell us about diving for fossils.

November - Mr. Ron Slotto will give a presentation on Chester County, PA collecting sites. He wrote the book, literally, and will have them available for purchase.

President's Message: By Mark Leipert, President

Summer is almost done and the days are getting shorter. This September's meeting is usually our annual "Show and Tell" meeting. We will be doing something different where the "show and tell" sharing experience will happen each month. You will have the opportunity to share your experiences with the club for about 5 to 10 minutes before our guest speaker or program begins. Please bring specimens you collected from any vacations or day trips you went on this summer.

Pickering Valley Golf Course, Phoenixville Trip – August 16th- We had a great day at the Brookdale and West Chester mine dumps (aka Wheatley Mines). Susan Moore, Jim Brennan, Reinhold Koeth and I drove up and met our newest member, Daniel Kowalski, at the golf course. We collected many specimens over course of five plus hours at both areas. Make sure you look at the photos of our prize specimens. We were all pretty much exhausted after hauling our prized specimens up the hill to the vehicles.

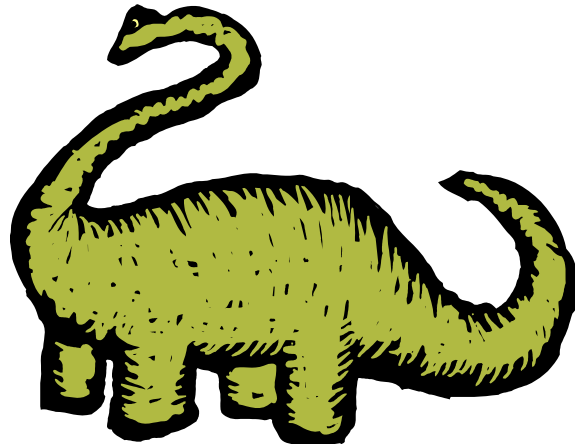


Annual Sterling Hill Mine Tour - Scheduled for September 20th- Our annual DVESS club tour of Sterling Hill Mine, Museum and Buildings is scheduled for September 20th. Please sign up at the September meeting if you plan on attending. This is a free tour to DVESS members. We are going to be using the Baptist Church's fifteen passenger van for transportation to the site. Several people will also be carpooling/caravanning to the site. We are also allowed to collect some of the fluorescent minerals before the mine tour begins. It will cost \$1.50 per pound of the Sterling Hill minerals. Sign up at the meeting or contact me at mark.leipert@yahoo.com if you plan on attending. There will be a gas fee charged to make sure the van is gassed up upon returning.

Inversand Community Day, September 27th- We are looking for some volunteers to help with the Saturday, September 27th Community Day event. We also need help to man a DVESS table with our club information and NJ fossil and mineral specimens. You will also be able to do some fossil collecting in designated areas. Other areas are also being excavated in conjunction with studies at Drexel University. Contact me at mark.leipert@yahoo.com if you are interested in volunteering.

Annual D.V.E.S.S. Banquet, Sunday, October 12th – Our annual banquet will be held at Café Fontana located at 30 East Main Street, Maple Shade, NJ. The event will run from 1:00 to 5:00. You will have your choice of two entrees, salad, rolls, and beverage. The cost will be \$15.00 per adult and \$10.00 for children under 12 years of age. Dessert will be provided by club members

(members will bring desserts to share with others). The club is paying for part of each person's dinner. If you worked the entire day at the "Super Dig" you will get your banquet ticket for free. We will have a guest speaker (Phil Betancourt), a silent auction and door prizes for everyone in attendance.



News

A Gigantic, Exceptionally Complete Titanosaurian Sauropod Dinosaur from Southern Patagonia, Argentina. <http://www.nature.com/srep/2014/140904/srep06196/full/srep06196.html>

Dreadnoughtus schrani is the most complete giant titanosaur ever discovered. Although it was over 25 meters long, it may not have been full-grown, yet. And there's a local connection - the study group's leader is Kenneth Lacovara from Drexel University.

Bardarbunga volcano erupts in Iceland: spectacular photos taken from the sky

<http://www.theguardian.com/travel/2014/sep/04/-sp-bardarbunga-volcano-erupts-iceland-spectacular-photos>

Kilauea volcano's lava nears homes on Hawaii's Big Island

http://www.oregonlive.com/today/index.ssf/2014/09/kilauea_volcano_lava_nears_hom.html

Tungurahua volcano in Ecuador: Increased activity

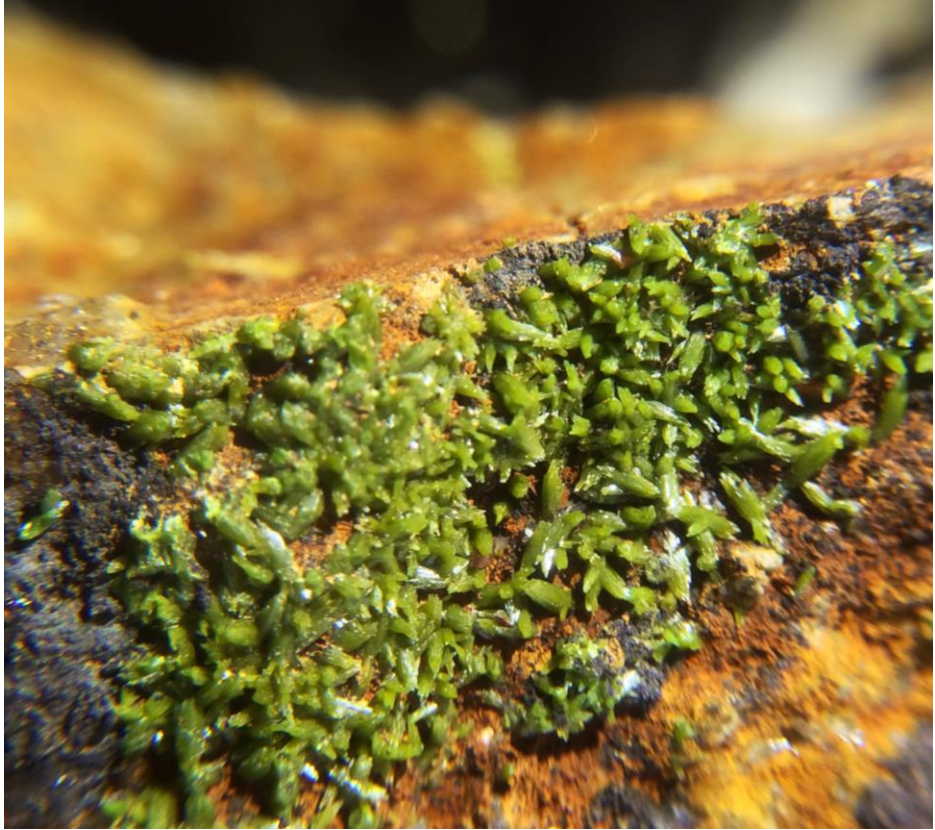
<http://www.bbc.com/news/world-latin-america-29030304>

Field Trip Photos by Jim Brennan & Susan Moore

Phoenixville, PA Mineral Collecting Trip – Saturday August 16th at the Pickering Valley Golf Club (the Brookdale mine dump and West Chester mine dump).







Quote of the Month

"It strikes me that all our knowledge about the structure of our Earth is very much like what an old hen would know of the hundred-acre field in a corner of which she is scratching."

- *Charles Darwin*

Upcoming Field Trips

September 20 - Annual Sterling Hill Mine Tour - Our annual DVESS club tour of Sterling Hill Mine, Museum and Buildings. Please sign up at the September meeting if you plan on attending. This is a free tour for DVESS members.

Shows and Events

September

September 27 - Inversand Community Day - Volunteers needed to help with the event and for a DVESS club information table. You will also be able to do some fossil collecting in designated areas. Contact Mark at mark.leipert@yahoo.com if you are interested in volunteering.



NEW JERSEY STATE MUSEUM and PLANETARIUM
www.statemuseum.nj.gov **Free Parking!**
205 West State Street, Trenton, New Jersey **Tuesday - Sunday 9 am to 4:45 pm**
(609) 292-6464 **Closed Mondays and state holidays**

 Chris Christie, Governor; Kim Guadagno, Lt. Governor; Anthony Gardner, Executive Director

September 27 - The New Jersey State Museum celebrates Smithsonian magazine Museum Day Live! 2014 with FREE planetarium shows, hands-on workshops, a special theater performance and a variety of FREE family-friendly programs.

Schedule of Events:

Digging Dinosaurs Workshop - 12 noon, 1 pm and 2 pm

Explore *Hadrosaurus foulkii* and other NJ dinosaurs. Learn about being a Paleontologist while you dig for dino bones and see how they fit together. Learn about the different types of dinosaurs and when they lived in New Jersey.

Paint Me A Story - 11 am, 12 noon and 3 pm

This open-ended workshop engages young children with art by giving them the opportunity to create and perform stories. In the second half of the program, each child will create their own artwork about one of the stories they told.

NANO Activity Cart - All Day

Think small, no, REALLY small! Explore the world of Nano Technology and learn about how it is used in things we see every day.

Traditions of India - 1 pm

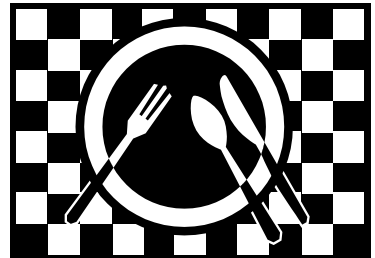
Born in Hindu Temples more than 2,000 years ago, Indian dance is movement, mime, and music in equal measure. Adorned with beautiful costumes, jewelry, and makeup replicating a temple sculpture, Ramya Ramnarayan evokes the profound emotions and complex rhythmic patterns that bring this mystic view of the universe to life.

FREE PLANETARIUM SHOWS ALL DAY!

- * 11 am - One World, One Sky
- * 12 noon - Stars!
- * 1 pm - Laser Kid Power
- * 2 pm - Black Holes
- * 3 pm - To Space and Back

October

October 12 - Annual Banquet. Our annual banquet will be held at Café Fontana located at 30 East Main Street, Maple Shade, NJ. The event will run from 1:00 to 5:00. Your choice of two entrees, salad, rolls, and beverage. The cost will be \$15.00 per adult and \$10.00 for children under 12 years of age. Dessert will be provided by club members. The club is paying for part of each person's dinner. If you worked the entire day at the "Super Dig" you will get your banquet ticket for free. Phil Betancourt will present "Archeology of the Earliest Copper Smelting Site in Crete, Greece."

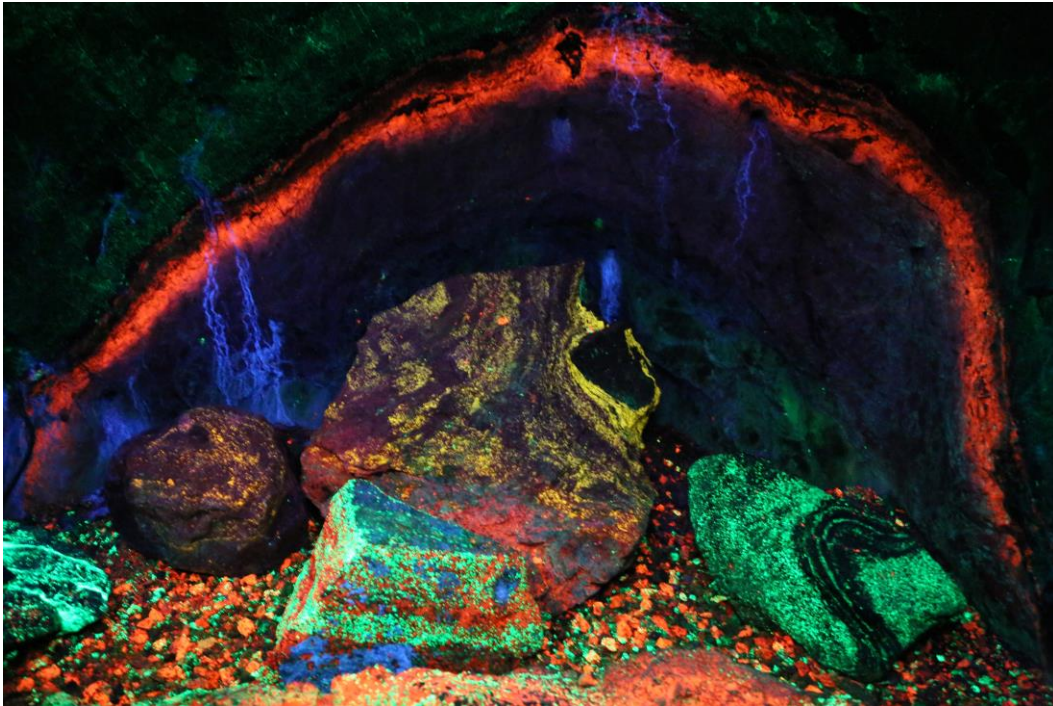


October 25 - Ultraviolation 2014 - Fluorescent Minerals Only. If Your Rock Don't Glow You're at the Wrong Show. Presented by The Rock and Mineral Club of Lower Bucks County. First United Methodist Church, 840 Trenton Road, Fairless Hills, PA. 9:00 am to 4:00 pm. \$2 donation - Kids 12 & under free.

Looking ahead

November 1–2: Exton, PA - 45th Annual Gemarama 2014 sponsored by the Tuscarora Lapidary Society. School at Church Farm, 1001 E Lincoln Highway, Exton, PA 19341.

April 25, 2015 - Sterling Hill Super Dig - mark your calendar!



Club Brochures

Please pick up one or two yellow club brochures and have them on hand in your vehicle or handbag to give out to folks. If you see a parent and child, strike up a conversation by asking, “Does your child like rocks or dinosaurs?” Offer them a club brochure; if they’re not from our area, addresses and websites for the American Federation are on the back of the brochure. Your small gesture may make a world of difference to that child, his/her family, and to our club.



Membership Information

Regular memberships are entitled to participate in all DVESS activities.

Sponsoring memberships are entitled to the same plus a specially chosen mineral specimen. Dues are renewable each year in January.

Regular Membership:

\$15.00 for the 1st family member + \$5.00 for each family member

\$10.00 for the 1st Senior (65+) member + \$5.00 for each family member

Sponsoring Membership: (each additional family member - \$5.00)

“Silver” \$50.00 for 1st family member – receive a Geode Specimen

“Gold” \$75.00 for 1st family member – receive Mineral Specimen

“Platinum” \$100.00 for 1st family member – receive Premium Specimen

Delaware Valley Earth Science Society Information

The Delaware Valley Earth Science Society, Inc. (DVESS), a non-profit organization, was founded in 1956 and incorporated in the state of New Jersey in 1957. The Society:

- promotes interest in, knowledge of, and the development of skills in the “earth sciences.” These interests include mineralogy, paleontology, lapidary arts, archeology, and local preservation.
- supports the conservation of natural resources, advocates the availability of collecting sites, and maintains close contact with those in the academic field.
- is a member club of the Eastern Federation of Mineralogical and Lapidary Societies (<http://www.AmFed.org/EFMLS>)

Delaware Valley Earth Science Society Inc. (DVESS)

P.O. Box 372

Maple Shade, New Jersey 08052

DVESS Website: <http://www.DVESS.org>



To submit an article or photos for publication in the DVESScapades, contact the Newsletter Editor at aquamarinepaisleyorchid@yahoo.com.

