

*Meeting Place: Evergreen Avenue School
Woodbury, New Jersey*

Meeting Time: 7:30 PM, 2nd Wednesday of month

*Meeting Date: **March 9, 2005***



Main Program

Scott Neiman from Flag Pond Park will be lecturing on the fossils of Calvert Cliffs.

Junior Rockhounds

Mr. Neiman will be presenting a hand on fossil program. Come out and get your hands dirty and have some fun.

Annual Club Pot Luck Supper – April 17, 2005
Centenary United Methodist Church, Rt. 30, Berlin, NJ

Field Trip - Trotter Dig, Franklin, NJ April 23, 2005
& Sterling Hill, Ogdensburg, NJ April 24, 2005



American Federation
of
Mineralogical Societies



Eastern Federation
of
Mineralogical & Lapidary Societies



Special Congress
Representing
Involved Bulletin Editors

DVESSCAPADES

Newsletter of the Delaware Valley Earth Science Society – DVESS

BACKGROUND

The Delaware Valley Earth Science Society, Inc. (DVESS), a non-profit organization, was founded in 1956 and incorporated in the state of New Jersey in 1957. The Society promotes interest, knowledge, and the development of skills in the “earth sciences.” These interests include mineralogy, paleontology, lapidary arts, archeology, and local preservation. The Society supports the conservation of natural resources, advocates the availability of collecting sites, and maintains close contact with those in the academic field.

MEETINGS

The Society meets the 2nd Wednesday of each month from September through June, at the Evergreen Avenue School in Woodbury, New Jersey. At 7:30 pm members meet to socialize, view displays, sign the registry and receive a door-prize ticket, toward a specially chosen specimen. Meetings start promptly at 8:00 PM and include the evening’s program followed by the monthly business meeting, concluding around 10:00 PM. Meetings are open to the general public.

MEMBERSHIP

See the Membership Chairperson for an application for membership in the Society. Regular memberships are entitled to participate in all DVESS activities and to receive a newsletter when published. Sponsoring memberships are entitled to all of the above plus a specially chosen mineral specimen. Membership rates for the Society are:

Regular Membership

\$15.00 for the 1st family member + \$5.00 for each family member
\$10.00 for the 1st Senior (65+) member + \$5.00 for each family member

Sponsoring Membership

<u>Level</u>	<u>1st Member</u>	+	<u>Additional Members</u>	=	<u>Receive</u>
“Silver”	\$50.00	+	\$5.00	=	Geode Specimen
“Gold”	\$75.00	+	\$5.00	=	Native Gold Specimen
“Platinum	\$100.00	+	\$5.00	=	Premium Specimen

Dues are renewable each year in January

Delaware Valley Earth Science Society Inc., - DVESS
P.O.Box 372
Maple Shade, New Jersey 08052

DVESS Website:
<http://www.dvess.org>

EFMLS Website:
<http://www.AmFed.org/EFMLS>

Editor's Notes

Editor is not responsible for authenticity of information in any articles submitted for publication. Nor are the opinions expressed in the “DVESScapades” necessarily those of the officers of the Delaware Valley Earth Science Society, Inc., and/or the editors.

To submit an article for publication in the DVESScapades contact the Newsletter Editor.

DVESS 2005 SPONSORS

Harvey Cantor – Platinum
Gerald Feigin – Platinum

Evergreen Avenue School
160 N. Evergreen Ave.
Woodbury, N.J. 08096
Privilege to enter the school is limited to the night of the meeting between the hours of 7PM & 10PM under the direction of the school staff.
Permission from the school staff is required to enter the school at any other time.

DVESS 2005 Officers & Positions

President Special Events Coordinator

Ann Lynne Benson
(856) 783-0969

SeleniteQueen@comcast.net

1st Vice President Jr. Rockhound Coordinator Field Trip Coordinator

Gerald Feigin
gfeigin@co.gloucester.nj.us

2nd Vice President Lou Detofsky

Treasurer Program Chairperson

Gary Weinstein
(856) 234-0708 – Home
(856) 795-5077 – Work
garvskyrock@comcast.net

Website Coordinator Terry Wilson (609) 714-1309

Recording Secretary Open Grant Elliot(acting) (856) 728-1731 gle@bellatlantic.net

Corresponding Secretary Open

Sage
Len Morgan
George Petreshock

Newsletter Editor Chuck O’Loughlin ac.oloughlin@att.net (856) 663-1383

Membership Chair Librarian Stu Cleveland cleveland@rowan.edu

President's Message by Ann Benson

SPRING is on the way! Time to get out from under that rock and get out and find something that rocks your world!

The Delaware Mineralogical Society show will be held Sat. and Sun., Mar. 5 and 6; see <http://home.comcast.net/~delminsociety/marchshow.htm> for more information.

Our DVESS **Pot Luck Dinner** has been set for Sunday April 17, 2 – 5 pm at Centenary United Methodist Church on Rt. 30 (White Horse Pike) in Berlin. We will undoubtedly be trying out Terry Wilson's wonderful new website: www.whosbringingwhat.com/dvess. Use this website to sign up to attend and to indicate what goodies you plan to bring. Coffee and tea will be provided. If fewer than 10 people sign up, we will probably cancel, but at least we'll know exactly who to contact, so don't delay signing up. Presumably we could also use this website to inform you of a change of date, since there will be no other newsletter before that date.

Registration is now being taken for **Wildacres** workshops June 3-9 and Sept. 12 – 18. Let me know if you need a registration form. Wildacres is located near Little Switzerland, NC.

More information about Wildacres and other doings of the **Eastern Federation of Mineralogical and Lapidary Societies** can be found in the EFMLS News. You can subscribe to the newsletter for \$4.50 per year by writing to PO Box 302, Glyndon, MD 21071-0302 or you can download the newsletter at no charge via the EFMLS website www.amfed.org/efmls.

Jay Lininger's mineral collection will be auctioned on Fri. May 6 beginning at 1 pm and Sat., May 7 at 9 am at Yingling's Auction Gallery, 1980 Baltimore Pike, Gettysburg, MD (that's **Maryland**). The collection may be viewed on Thursday, May 6 from noon until 8 pm and on Friday beginning at 9 am. For more info see www.yinglingsauction.com or call the gallery at 717-334-1568. Jay's is one of the best Pennsylvania mineral collections, but also includes many world-wide specimens.

A packed bus of happy, hopeful DVESS member and guests embarked for New York City and the American Museum of Natural History on Saturday, Feb. 19. A good time was had by all.

Our next field trip will be even better, if you join us.

Editor's note: In a prior life, Ann was a general for the Confederate States Army and was responsible for bring up the supplies and reinforcements needed by General Robert E. Lee to be successful at Gettysburg. Fortunately for the Union Army, General Benson believed that Gettysburg was in Maryland and never made it to the battlefield in Pennsylvania. Thus the nation was saved.

Normally as editor I would correct such minor errors, but when Ann went so far as to emphasize that MD stood for Maryland it was just too much to pass on. I know that Ann only copied the information from the EFMLS News, but she failed to check her facts or credit her source (any further problems and a 30 day suspension may be required).

For all of you geography students out there, I would also like to bring to your attention that Pennsylvania is in the United States of America, which is located on the continent of North America. If you require further assistance in locating Gettysburg, PA check the web site Ann referenced for directions.

February 9, 2005 General Meeting Minutes by Grant Elliott, Acting Recording Secy.

Gerald Feigin, Acting President gaveled the meeting to order at 8:00pm. Present were Gerald- 1st VP/Field Trips/Junior Rockhounds, Gary Weinstein- Treasurer/Programs, Grant Elliott- Recording Secretary (A/K/A Scribal Servant), Len Morgan- Sage, Terry Wilson- Website Coordinator, Lou Detofsky- 2nd VP (A/K/A World Traveler Gadabout), and Chuck O'Loughlin- Newsletter Editor (A/K/A Resident Humorist and Raconteur). Unable to attend were President Ann Benson and Membership/Librarian Stu Cleveland.

Gerald conducted a Rockhound session on Sulfides. Next month will feature Carbonates.

36 people were in attendance to hear Karen Snow, co-author of "Gem Trails Of Pennsylvania and New Jersey", speak on Pine Barrens geology. Karen's presentation covered some fascinating facts regarding the geology and paleontology of New Jersey. It is daunting to know that in this area of New Jersey we live on unconsolidated sand. May we never have an earthquake of any note.

The door prizes were won by Pat Carey and none other than Karen Snow. The January's General Meeting minutes were passed and seconded.

Fields trips discussed were this month's AMNH New York City bus trip and April's Trotter/ Buckwheat/ Sterling Hill weekend. Volunteers are needed to assist on this weekend event.

PAYPAL is now set up and ready for use.

Executive Board meeting will be at Ann's house on February 16, 2005.

Meeting concluded at 9:45pm.

Club News by Chuck O'Loughlin

The proverbial not quite ready to be coprolite hit the spinning blades of a high velocity ventilation device as a result of DVESScapades article by our intrepid reporter, Thaddeus Bloodstone, on the January Executive Board meeting. The city fathers and mothers of Punxsutawney, PA (that Pennsylvania - sorry Ann, I just can't help myself) protested that Bloodstone had denigrated the name of their beloved groundhog, Phil, by using him in a comparison to the club's executive board. Next the Executive Board threatened to withhold funding for the newsletter unless Bloodstone was disciplined and apologized. Bloodstone, of course, was incensed that I would allow some "malcontents" to infringe upon the freedom of the press. Caught between a bloodstone and a hard place I did what any other editor would have done, I compromised. Bloodstone would not have to apologize, but would serve a 30 day suspension without pay. Further to allay the concerns of the Board that some members (substitute board members for members) were experience difficulty in differentiating between fact and fiction that the newsletter should be restored as serious scholarly journal and vehicle for distributing club news. In exchange, the Board agreed to fund a small supplement to the regular newsletter for items of a lighter nature or of questionable factual basis.

In a related story, Acting Recording Secretary, Grant Elliot, attempted to resign his position. Citing the immense embarrassment he experienced as a result of the Bloodstone article. DVESS President Ann Benson refused to accept the resignation advising that the law of NY (that's New York) where the Club is located does not allow resignations due to embarrassment.

Club News (continued)

On a more serious note, we sadly announce the passing of long time (Life Time) member Mrs. Sylvia Terres.

Junior Rockhound News by Gerald Feigin

The field trip to the American Museum of Natural History stimulated my creativity for future JR programs. Some of the exhibits in the mineral hall were organized by chemical associations which we started doing last month and will continue following the break this month for a special program. This month the Club's guest speaker will also be making a special hand on presentation for the JR. It promises to be fun and informative. Be sure to invite your parents and friends to come along.

Programs by Gary Weinstein

This month's program features **Scott Neiman**, who will speak to us about the fossils of Calvert Cliff, MD. Mr. Neiman is a ranger at the Flag Pond Park, site of a recent Club field trip. He is one of the fortunate few whose passion and job are related. He will be bringing specimens of the fossils available in the Calvert Cliffs vicinity. If you share Mr. Neiman's passion for fossils, do not miss this exciting opportunity.

April's program will be featuring a slide presentation and lecture on the history of the Franklin and Sterling Hill Mines by Ms. **Carrie Papa**, author of *A Mile Deep and Black as Pitch, An Oral History of the Franklin and Sterling Hill Mines*. Ms. Papa will also be offering her fantastic book for 10% off the retail price or \$22.50. The book received a rave review by Chuck O'Loughlin in the November 2004 issue of DVESScapades. So be sure to be at our April meeting and get yourself an autographed copy of this outstanding book and see and hear about an era of New Jersey's history that is disappearing as fast as our open space.

Upcoming Field Trips

Triple Diggg (Trotter Dump, Buckwheat Dump & Sterling Hill) April 23 & 24, 2005
Franklin/Ogdensburg, NJ by Jeff Winkler

THE 2005 TRIPLE DIGGG IS ON!!!

Along with the 32nd Annual NJESA [Gem & Mineral Show](#) & Outdoor Swap & Sell!

The Delaware Valley Earth Science Society (DVESS) and the North East Field Trip Alliance (NEFTA), in cooperation with the Franklin Mineral Museum and Sterling Hill Mining Museum, invite you to share an international collecting experience.

This field trip has attracted dedicated collectors from across the globe. Be one of them this year!

Trip Master for 2005 is: Jeff Winkler, 55 White Way, Pompton Lakes, NJ 07442 tel. 973-835-2582

For more information contact Jeff or visit www.uvwworld.org

Field Trip Report by Gary Weinstein

DVESS make annual bus trip to the Museum of Natural History in New York.

It was a cold and windy day, on February 19th, as 43 members and guests attended our yearly outing to one of the large museums nearby. Many of the attendees had never been to this museum before. It seems that all had a good time and made it home intact. There were three videos brought by our Secretary-in-waiting, Grant Elliot (he's waiting for someone to come forward to take over the position). One was on Dinosaurs of the Gobi and the two coming home were on Amber.

The 50/50 drawing on the way up was won by member Doug Frost. We had our first ever three for one raffle on the way home. New member Nancy Fulton won the display specimen of Actinolite Crystals. The Petrified Wood was won by Bob Todd. The Meteorite from Africa was taken home by Guest Donna Bukowski.

Many new displays were open for the first time. We successfully collected all members and guests for the return from NYC. An exhausted group of rockhounds were sated for another 12 months.

Help Wanted by Grant Elliot

For the last several months I have been serving reluctantly as the Club's Recording Secretary. I did not volunteer for this job, but was tricked into serving by some cocked up story by the editor of this rag about the Sage seeing my face in the ceremonial smokey quartz. It is not that the job is hard work or that I don't enjoy being active in the Club and working with all the beautiful people, but I have been there and done it already. Please be kind and volunteer to take my place. Please!!!

Editor's note: A very sad state of affairs, Mr. Elliot has gone from whining in private to public whining.

Calendar of Shows and Events compiled by Chuck O'Loughlin from various sources

Paul Funk reports the following:

For those of you reluctant to pay several hundreds dollars to dig for dino fossils in Montana, why not hear what is going on out there without leaving New Joysey? NJPS is pleased to announce our speaker for the **March 14th** meeting. Please make a point to come out for a great presentation. **THE DINOSAUR ECOLOGY OF HELL HOLLOW** - Guest Speaker: **Joseph Hatcher**. Having completed a three year field study in the Hell Hollow Quad of eastern Montana's Upper Hell Creek Formation, Joseph Hatcher, Curator of Paleontology to PaleoWorld Research Foundation <http://www.paleoworld.org> will discuss the Late Cretaceous dinosaur ecology in western North America: Dinosaur biodiversity in both space and time, predator verses prey, microfossils across the K/T Boundary and where this exciting data is leading towards future expeditions.

The New Jersey Paleontological Society was formed in 1991 for the educational and scientific pursuit of Paleontology and related Earth Sciences. Meetings are currently held monthly from September to June beginning at 7:30 p.m., at the Bergen County Social Services Building, corner of Ridgewood and Farview Avenues, in Paramus, NJ. Please visit: www.njpaleo.com

Calendar of Shows and Events (continued)

March 5 & 6, 2005 - 42nd Annual Earth Science Gem and Mineral Show sponsored by the Delaware Mineralogical Society, Delaware Technical and Community College, I-95 exit 4B, Churchmans Road (Route 58) Newark (Stanton), DE.

March 12 & 13, 2005 - 16th Annual Clifton Gem and Mineral Show sponsored by the North Jersey Mineralogical Society, Pope John Paul II Elementary School, 775 Valley Road, Clifton, NJ

March 18 – 20, 2005 - 36th Annual Che-Hanna Rock and Mineral Show and the 55th EFMLS Convention and Show, Athens Township Fire Hall, Sayre, PA.

March 19 – 20, 2005 – 41st Annual Gem, Mineral & Fossil Show presented by the Gem, lapidary & Mineral Society of Montgomery County, MD, Montgomery County Fairgrounds, Gaithersburg, MD.

April 1 - 3, 2005 – Atlantic Micromounters Conference sponsored by the Micromounters of the National Capital Area, Maryland Hospital Center, Elkridge, MD for info & registration contact Steve Weinberger at cweinber@bcpl.net

April 9 – 10, 2005 – Philadelphia Mineral Treasures and Fossils sponsored by the Philadelphia Mineralogical Society and the Delaware Paleontology Society, Lulu Temple, 5140 Butler Pike, Plymouth Meeting, PA

April 23 – 24, 2005 – 33rd Annual New Jersey Earth Science Association Gem & Mineral Show sponsored by the Franklin Ogdensburg Mineralogical Society, the New Jersey Earth Science Association and the Sterling Hill Mining Museum, Franklin School, Washington Avenue, Franklin, NJ

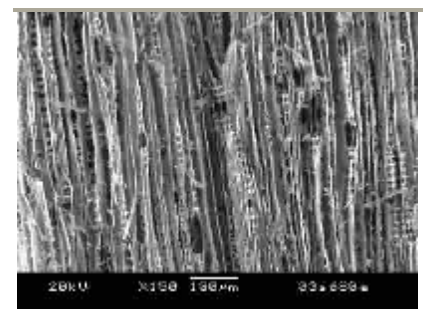
Articles of Interest

Pacific Northwest National Laboratory scientists can mineralize wood in record time

RICHLAND, Wash.--California has Silicon Valley. Could a Silicon Forest in Washington be next? A team of materials scientists from Pacific Northwest National Laboratory is on it.

Yongsoon Shin and colleagues at the Department of Energy lab have converted wood to mineral, achieving in days what it takes nature millions of years to do in such places as the Ginkgo Petrified Forest, an hour up the Columbia River. There, trees likely felled in a cataclysmic eruption and, buried without oxygen beneath lava, leached out their woody compounds and sponged up the soil's minerals over the eons.

Shin's petrified wood journey began in a less dramatic fashion, a few minutes away at Lowe's, Shin's group reports in the current issue of the journal *Advanced Materials*, in the do-it-yourselfer chain's lumberyard,. There they picked up their raw material: pine and poplar boards. Back at PNNL, they gave a 1 centimeter cube of wood a two-day acid bath, soaked it in a silica solution for two more (for best results, repeat this step up to three times), air-dried it, popped it into an argon-filled furnace gradually cranked up to 1,400 degrees centigrade to cook for two hours, then let cool in argon to room temperature.



SOAKED, DRIED & PETRIFIED: An electron microscopic image shows a cross section of wood that was artificially petrified in days, mimicking a natural process that takes millions of years. Materials scientists are interested in the novel properties of ceramics built on wood templates. (Photo credit: Pacific Northwest National Laboratory.)

Full size image available through contact

Articles of Interest (continued)

Presto! Instant petrified wood, the silica taking up permanent residence with the carbon left in the cellulose to form a new silicon carbide, or SiC, ceramic. The material "replicates exactly the wood architecture," according to Shin.

Although SiC chips are unlikely to replace computer chips, materials scientists are interested in the novel properties of ceramics built on templates of wood and, in Shin's lab, other natural materials such as pollen and rice hulls. The intricate network of microchannels and pores in plant matter provide enormous surfaces--in wood, 1 gram of material flattened out would cover a football field--that may prove useful in industrial chemical separations or filtering pollutants from gaseous effluents.

The acid-leaching method yields an identical, positive reproduction of the wood. If Shin wants to capture a negative impression, he can alter the pH to favor the base end of the scale.

"The positive replica is a lot better in terms of surface area and uniformity," Shin said. "Negative forms collapse easily, but it is possible to make fiber-type materials," where the minerals fill in wood-grain openings.

###

PNNL (www.pnl.gov) is a DOE Office of Science laboratory that solves complex problems in energy, national security, the environment and life sciences by advancing the understanding of physics, chemistry, biology and computation. PNNL employs 3,900, has a \$650 million annual budget, and has been managed by Ohio-based Battelle since the lab's inception in 1965.

Web sites of Interest

http://www.eurekalert.org/pub_releases/2005-01/dnnl-wtp012405.php See preceding article submitted by Paul

http://www.space.com/scienceastronomy/diamond_planets_050208.html Diamonds are a girl's best friend, even in space - Grant Elliot

<http://brysonburke.com/aboutdiamonds.html> another from Grant Elliot

A few sites submitted by Ann Benson, so many in fact that I will have to save some for next month.

Introduction to Trilobites <http://www.trilobites.info/trilobite.htm>

See a **3D virtual trilobite** at <http://www.nhm.ac.uk/museum/vr/vrtrilo2.html>

Trilobite cookie recipe <http://www.georgehart.com/trilobites/trilobite.html>

Systematic Listing of Trilobite Families <http://www.trilobites.info/trisystem.htm>

Trilobite Names and Faces <http://www.trilobites.info/genera.htm>

<http://www.geoclassics.com/crinoid.htm>

<http://www.fossilcrinoid.com>

<http://www.microscopy-uk.org.uk/mag/indexmag.html?http://www.microscopy-uk.org.uk/mag/artjul00/echino.html>

Gallery of Echinoderm larvae <http://www.geoclassics.com/crinoid.htm>

Letters to the Editor

Thaddeus Butterstone wrote to ask, what do I get for my dues? (The question was submitted prior to his suspension so the Editorial staff decided to allow it to go through.)

My dear Butterstone, let see what it actually costs to have you as a member of our club. Regular membership is \$15.00 American, (\$10 for seniors and \$5 for additional family members). Out of your \$15 dues, the Club sends \$1.25 per person to the Eastern Federation. Liability insurance so that we can have use the school for a meeting place and go on field trips consumes another \$3.16 per person. The ability to acquire inexpensive insurance is a benefit of the membership in the federation. We also pay for an accident policy at \$2.40 per person which covers any club activity accident above and beyond your own policy, including any deductible. So far The Club has sent off \$6.81 of your dues payment without actually seeing any of your money. The remaining \$8.19 is all that is left to the Club to cover our various expenses, including;

- 1. Postage for 10 bulletins a year at \$3.70. Or more if we go over the weight limit. That leaves only \$4.49 to cover all the remaining costs.*
- 2. The annual picnic, at which the club picks up the tab for hot dogs, burgers, sodas, chips, condiments, etc.*
- 3. Speakers' honorariums, to educate, elucidates and entertains the members at meetings.*
- 4. Bills incurred and submitted for reimbursement for phone calls and postage to get those speakers and field trips scheduled. (The majority of those bills are never submitted but absorbed by your faithful volunteer officers.)*
- 5. The bus trip is subsidized by the club to make it affordable for families with junior members.*
- 6. How about the cost to print this bulletin? That alone wipes out more than the remaining dues. Especially when our beloved editor gets carried away and decides to print everything even what not fit to print.*

If it were anyone other than you dear Butterstone, I would at this point say that it is clear as Muscovite that the Clubs is actually loosing money having you as a member. We are, after all, a non-profit organization.

So, how is it that we manage to do all this and keep the club alive? Well besides your dues, some of our members make donations to help us along.

These donations include;

- 1. Premium memberships.*
- 2. Time and postage and phone calls not billed to the club by the officers.*
- 3. Mineral, fossil and meteorites donations for fund raising by sale at our pick table and club auctions and raffles.*
- 4. The Trotter dig, where the land owner graciously offers us a donation to help out, for the few brave souls who man the front tables and make sure the day goes well.*

I know you dear Butterstone and you are now asking yourself what more can I do to help this worthy organization. Well by agreeing to have the bulletin sent to you by email will save a lot of dollars over the course of a year. Another way to help is by volunteering your time. Many tasks are being done by a few weary souls. But even if you can't find the time, do continue to be a member in good standing by paying your dues as we do so enjoy your company and if you can, please donate any funds or specimens you can spare or help out at Trotter or some other Club event. Volunteering is a wonderful way to get to know your fellow Club members.

Crusty Olfozil

In this the inaugural issue of Esscape we are please to introduce Rodinia as the Assistant Editor in charge of our sibling publication. We were very fortunate to have found Rodinia, who comes to us with a good deal of experience that she earned as a staff writer for another mineral publication, "Rolling Stone Magazine". Welcome aboard Rodinia.

Chuck O'Loughlin Editor

Esscape's Rodinia goes one on one with the leader of the Geologican political faction, Doc Roc

Esscape: *What are the aspirations for your Geologican faction?*

Doc Roc: *Presently we our very few in numbers and we hope to attract more adherents to our cause through education. We want people to be focusing on seeing and experiencing the big picture, such as the dynamic nature of the earth as it has changed over the eons or just the immensity of the Universe itself rather than concentrating on individual fossils or minerals.*

Esscape: *So when your say the big picture, you are not talking about a large screen television?*

Doc Roc: *No my dear, I am talking about expanding your mind not acquiring larger material possessions.*

Esscape: *Oh, now I understand, at my last job there was a lot of mind expanding going on. Do you plan to run for President of DVESS in 2006?*

Doc Roc: *It is far too early to discuss 2006, but I will say that the organization would benefit by having a big picture person in charge.*

Esscape: *Should I take that as an endorsement for Governor Arnold?*

Doc Roc: *No! I was not even aware that he was in the Club, and even if he were, he would hardly be the ideal candidate. He foolishly believes that he can hold back gravity and rebuild houses upon unstable geological formations.*

Esscape: *As a rock expert, I was hoping you could explain to our readers why the Rock & Roll Hall of Fame is in Cleveland of all places?*

Doc Roc: *I wasn't even aware that there was a Rock Hall of Fame in Cleveland and I must admit that I am rather puzzled as to why they would combine a rock museum with a museum dedicated to bakery products, but than it is Cleveland. Perhaps the Club should schedule our next bus trip to that museum, as I am rather curious to find out if the rolls are petrified. I believe Cleveland is somewhere on the other side of the Delaware River, so it should not be too far for a bus trip.*

Esscape: *Last question, do you prefer the Beatles or the Stones?*

Doc Roc: *Why stones of course, if I had any interest in beetles, I would have studied entomology.*

As the 2006 campaign heats up, Esscape hopes to bring you in depth interviews with all of the leaders of the various factions that make up the DVESS organization. It is our opinion that the apathy the membership has repeatedly demonstrated for Club elections has been a result of the failure of the press to inform the membership of the choices available to them. Next month the Flat Earth Society will attempt to put there best foot forward.

News about the Club & its membership

*Esscape has learned that Acting Recording Secretary, **Grant Elliot**, has made several attempts to shed the Recording Secretary duties. Elliot claims that it is necessary to shed his Club responsibilities so that he can focus his time on more profitable adventures. Rumors circulating on the street indicate that Elliot is teaming up with Roger Bucks (one of the pioneers of space travel predating NASA and the Soviet space program) to commercially mine diamonds in outer space. At present the adventure appears to be under funded and lack any credible plan to exploit space minerals, but we have assigned one of our crack reporters to follow up with this risky by high potential scheme.*

News about the Club & its membership (continued)

PETAR (People for the Ethical Treatment of Animal Remains) has announced a demonstration outside Gary's Gem Garden, Sawmill Village Plaza, Rt. 70, Cherry Hill, NJ, on Saturday March 12, to protest the large inventory of fossils that have been ripped from their rightful resting places. Mr. Weinstein has requested the Club's support in organizing a counter demonstration for that same date. [Please pardon the blatant advertising for a commercial establishment, but Gary did promise that he would see about getting the staff of Esscape a 10% discount on Carrie Papa's book if we were able to mention his store in the publication.]

The following is a paid advertisement (due to uncertain funding by the Exec. Board limited ads are being accepted)

Grant Elliot and Roger Bucks proudly announce the formation of a new commercial enterprise to harvest the mineral wealth available in space. Hopefully you have reviewed the web sites that I shamelessly bribed the Editor of DVESScapades to publish in this month's newsletter and are aware of the immense wealth just sitting out there and waiting for the right group of investors. Roger & I are just the right duo to lead those lucky few investors to the Promised Land of immense wealth. Due to the urgency to get the project underway before any competitors possibly stake out claims to our discoveries, we have not yet completed all the necessary paper work, so investor's subscriptions can be only accepted in cash. Subscriptions start at \$100 and upward. \$100 subscribers will be listed in our annual report as founding fools (fools as in foolish that you did not invest more in this sure fire get rich quick scheme). \$1000 subscribers will be given the honorarium of platinum fool. President Bush has approved this investment for his alternative Social Security program.

Letters to the Editor

I must protest the description of the food served at January's Executive Board meeting. It was described as being nutritionally deficient. I will have you know that there was an ample supply of ketchup, which according to the late great Ronald Regan is a vegetable. It is also an excellent source of lycopene. Guest had the option of loading their steak sandwiches with onions and peppers all be it fried in grease, but none the less a source of essential vitamins and minerals. Lastly the health of my guests is important to me so I had made sure that many of the sodas available were sugar free (substituting an array of chemicals for the natural sweeteners). As everyone knows life without chemicals is impossible.

Signed only pretended to have moved to Tennessee to avoid serving as a Club Officer

Dear pretending, not a very auspicious confession for someone who claims to have moved to the "Volunteer" State, regardless don't let Bloodstone get to you down. He treats everyone equally bad. Rodinia

I have been attempting for some time now to resign my position as a Club Officer, but have been told that as I was appointed by the Smokey Quartz, that only the Smokey Quartz can recall the appointment. Can you help me?

Signed Scribal Servant

Dear Servant, only the Club Sages are allowed to see and speak to the Smokey Quartz, so we asked Mr. Morgan to intercede on your behalf. Sage Morgan conferred and informed us that the SQ was not at all happy having its judgement questioned by mere mortals. The Sage appeared quite shaken from the encounter and on further questioning, advised that the SQ threaten to bury itself deep inside a recess of any offending mortals. The Sage described the SQ as being large and phallic in shape. Regrettably our classical education is not what it should be, but I believe from watching the history channel that phallic was the battle formation used by the ancient Greeks and Romans and is represented by a large box with a lot of sharp projectiles protruding from it. The Sage did not specify which recess but which ever it is it will undoubtedly be painful. You may wish to reconsider. Rodinia

DVESScapades

The Newsletter of the
Delaware Valley Earth Science Society

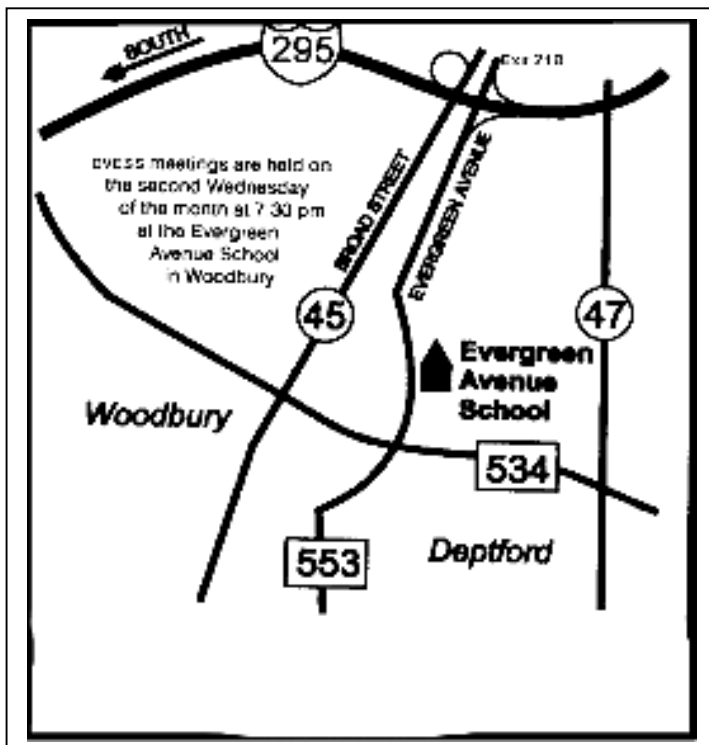
PO Box 372

Maple Shade, New Jersey 08052



DVESScapades

March 2005



This Month's Meeting:

March 9, 2005

Main Program

Scott Neiman from Flag Pond Park will be lecturing on the fossils of Calvert Cliffs.

Junior Rockhounds

Mr. Neiman will be presenting a hand on fossil program.