

# DVESScapades

*escapades: interesting, stimulating, exciting activities and adventures*



## Delaware Valley Earth Science Society Newsletter



Delaware Valley Earth Science Society, Inc. ( DVESS )  
P.O. Box 372 Maple Shade, N.J. 08052  
DVESS Website : <http://www.dvess.org>

### Meeting: July 13, 2011

**Program:** Amy Carpennelli, on mass extinctions.

**President's Message** - July We had great weather for the picnic last weekend, and the people who made it out had a good time, ate good food, and got some good buys at the auction. Thanks Gerald and Jane once again for hosting this annual event.

On a sad note, June's speaker, Patti Kane-Vanni, was too ill to make it out to the meeting, passed away the following week from ovarian cancer at age 57. Professionally, she was a lawyer, but she was quite accomplished as a paleontologist, artist, and singer. Some members may recall her visit to the club (when we met at Rowan) when she talked about her theories of mythological creatures being inspired by dinosaur fossils. Many of us bought her book at that meeting, which she also illustrated.

We are planning a commercial cavern field trip in late July; stay tuned via email for more details.

--Terry Wilson

Don't forget to bring interesting finds to the club, so we can all ooh and ahh over them. Each month feel free to show and tell anything you have acquired so we can all learn.

ALSO !! Now, – a call for your photos of the day's events at Sterling hill, club meetings, our picnic and of your doings you are willing to share. Email me at [decuzzic@comcast.net](mailto:decuzzic@comcast.net) or put them on your facebook page and give me the access to copy them and print them in the newsletter, thanks. Ed

#### Inside this Issue - June, 2011

Pres message	Pg 1
meeting minutes, trips	Pg 2
Welcome to Fossils	Pg 5
What is a fossil	Pg 6
Trilobites	Pg 7
Emergency Kits	Pg 3&4
Society Info	Pg 11
Membership form	Pg 13
Code of Ethics	Pg 12
Society Directory	Pg 11
Word Search	attached file

DVESS General Meeting Minutes      By Grant Elliott, Recording Secretary  
Meeting was held at Centenary UM Church in Berlin, NJ.

Programs:

July Amy Carpennelli, on mass extinctions.

Aug To be announced.

Sept Our annual fantastic, members 'Show and Tell'.

Oct /Nov Lou Detofsky or Don Miller (Fossil elephants) will make presentations, depending on their health. Lou previously volunteered to give a presentation on "Geology of the Caribbean".

Dec Xmas party.

Field trips:

July 23rd- Cavern trip in Pennsylvania

Sterling Hill was a success. 159 people had signed up and 3,000 pounds of rocks were collected

By Grant Elliott, Recording Secretary

Summer – A Photo-Op Season



This summer, your club will, no doubt, be having lots of field trips, a picnic, maybe a show, possibly youth activities and workshops all of which are perfect photo opportunities. Why not a Photographer at these events? Could you save those priceless digital shots to be shared with your club newsletter or a poster of photos for our wall? PLEASE See below. . . . Questions? Contact me at [decuzzic@comcast.net](mailto:decuzzic@comcast.net) or 856-428-0621, THANKS!

This space left empty for your ARTICLE and/or photos

Still waiting.....

From the New Jersey State Museum <[newjerseystate.museum@sos.state.nj.us](mailto:newjerseystate.museum@sos.state.nj.us)>

We're so excited about our Central Jersey and Philadelphia Groupon deal. Three offers are available:

\$10 gets you four Planetarium Sky Show Tickets (Reg. \$20)

\$30 gets you a one-year family [membership](#)\* (Reg. \$60)

\$50 gets you a one-year contributor [membership](#)\* (Reg. \$100)

These offers are only available for a limited time, so visit Groupon [Central Jersey](#) or [Philadelphia](#) for more information.

The summer Planetarium schedule begins July 5\*

**Tuesday through Friday**

**10:00 am *One World, One Sky*                      11:00 am *Passport to the Universe***

**1:00 pm *Dawn of the Space Age* - BRAND NEW SHOW ADDED!**

**Saturday and Sunday**

**1:00 pm *One World, One Sky*                      2:00 pm *Passport to the Universe***

**3:00 pm *Dawn of the Space Age***

**Sky show tickets are \$5 per person.**

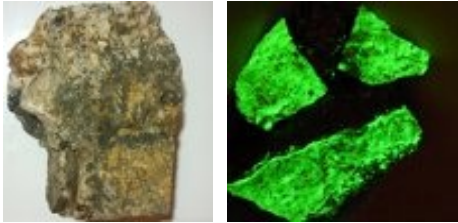
\* Summer schedule runs through September 4, 2011. Program subject to change, please check [website](#) for details.

for pictures of our Sterling Hill big dig pull up this link to Rockhead's photos

<https://skydrive.live.com/?cid=b7ca6d5950b5eba9&sc=photos&Bsrc=Photomail&Bpub=SDX.Photos&id=B7CA6D5950B5EBA9%21176&sff=1#cid=B7CA6D5950B5EBA9&id=B7CA6D5950B5EBA9%21154&sc=photos> copy the link and put it in your google address bar. Enjoy. Thanks to "Rock Head ► Sky Drive ► Pics from Digg 2011".

Sorry but I was not able to put the photos in the newsletter PDF file, don't know how.





Here's the list of winners, in the order they were awarded:

Kids:

- |                        |                            |                    |
|------------------------|----------------------------|--------------------|
| 1. Nora Lyons          | 2. Adrianna Mitchell       | 3. Samantha Carey  |
| 4. Alex Macom          | 5. Tessa Anne Falconehertz |                    |
| 6. Joseph Sommers, Jr. | 7. Ryan Chappel            | 8. Joe Kartis      |
| 9. Joe Riedl           | 10. Emilyh Silvergled      | 11. Kayla Timbrell |
| 12. Alex Hancock       |                            |                    |

- Adults      1. Frank Midkiff      2. Glenn Browne      3. Billy Silverglen      4. Kathy Noret

Yeah I got them as you can see!!! Click on the photo to enlarge it.

Field trip report from Gary;

On Sunday, June 12th our planned field trip to Ringing Rocks Park was held, though the weather called for scattered thunderstorms. It was a beautiful day, not too hot and not too cool. The clouds did not threaten but protected us. In attendance were club President Terry Wilson, Treasurer Gary Weinstein, his two daughters, Danielle and Crystal, as well as his sister Beth, her daughter Jessica and her friend. Not as large a turn out as we had hoped for this event but a great time was had by all. Besides banging out tempos on the boulders, which rang beautifully, we visited the local waterfall, climbing in it without getting wet. All participants said they would go to this site again in spite of not bringing home any boulders.

Thanks Gary.

St Claire photos from James Brennen





**THIS IS THE ONLY TIME WE WILL SEE AND LIVE THIS EVENT  
Calendar for July 2011**

**July**

Sun	Mon	Tue	Wed	Thu	Fri	Sat
?	?	?	?	?	1	2
<b>3</b>	4	5	6	7	8	9
10	11	12	13	14	15	16
17	18	19	20	21	22	23
24	25	26	27	28	29	30
31	?	?	?	?	?	?

Money bags This year, July has 5 Fridays, 5 Saturdays and 5 Sundays. This happens once every 823 years. This is called money bags.

Kinda interesting - read on!!!

This year we're going to experience four unusual dates.

1/1/11, 1/11/11, 11/1/11, 11/11/11 and that's not all... Take the last two digits of the year in which you were born - now add The age you will be this year, The results will be 111 for everyone in

whole world. This is the year of The Money!!! The proverb goes that if you send this to eight good friends money will appear in next four days as it is explained in Chinese FENGSHUI.

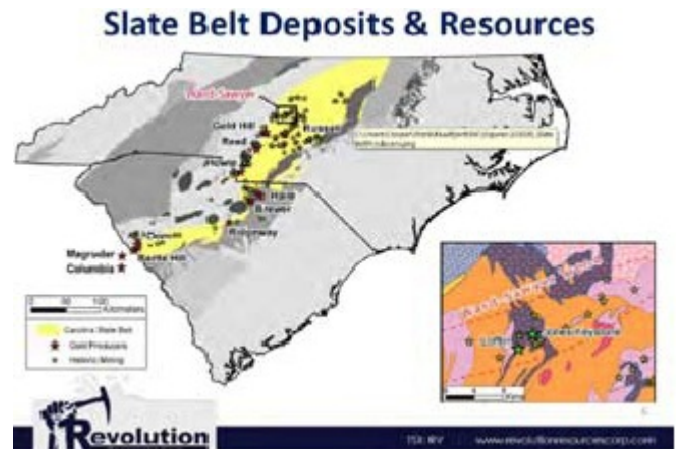
Fun

With the high price of gold, gold mining in the Southeast is coming back

On January 6, 2011 Revolution Resources Corporation announced that significant gold mineralization has been encountered in the first drill holes completed at its Champion Hills Project located in the North Carolina portion of the Carolina Slate Belt (see map on next page).

Although the Carolina Slate Belt was where gold was first discovered in the U.S., and although there has been widespread evidence of the presence of gold mineralization in this geological setting, western states such as California, Nevada and Alaska have been areas of primary focus for gold mining in the U.S. The Carolina Slate Belt, running through both North and South Carolina, hosts a couple of dozen historic gold mines. In fact, the region was the biggest gold producer in the United

States before the California gold rush. There was a resurgence of activity in the region in the 1930s, but little further work was done until the 1990s when a couple of major mining companies began work in the area.



The Carolina Slate Belt, in spite of its prolific production history, has seen little modern exploration, and historical gold production was all shallow, effectively chasing surface occurrences with primitive mining methods. The main reason the Carolina Slate Belt has taken a back seat to the western states is because the land in the Slate Belt is carved out into small, privately-owned properties, as opposed to vast areas of land owned by the U.S. government out West. During part of the 300 year history of the area, mineral rights were split off from the surface rights and land ownership became very fractured. In the 1980s, the ownership of much of the mineral rights was re-attached to the surface rights, making it practical, but still challenging, to assemble mineral property positions.

However, once a land package of size is assembled, the permitting process, starting with drilling and going all the way through to production, is simpler than on government-owned lands. The little box labeled Ward-Sawyer Trend in the map shows two primary properties currently held by Revolution Resources Corp. Ward-Sawyer is a major structural trend in the Slate Belt. The two properties, the Jones-Keystone Property and the Lofflin Property, are collectively known as "The Champion Hills Gold Project." The Jones-Keystone Property at present measures 164 acres. During the 1930s there was some limited mining carried out, but mostly from a surface saprolite zone.

The Lofflin Property measures 170 acres. There was also some limited surface mining on saprolite zones on this property during the 1930s. By teaming up with knowledgeable locals, Revolution was able to secure significant blocks of mineral rights that covered areas of primary geological interest. The property acquisition program is continuing, as the geological team pursues other targets of interest. . Another mining company working the 400 acre Haile Mine in South Carolina estimates its gold resources at 4.2 million ounces.

*Article Courtesy of Carl Talbott The Southeast Federation of Mineralogical Societies, Inc.*

For your travel pleasure, consider the following fun places to go...

**July:**

- 6-10 Syracuse, NY - EFMLS/AFMS Convention & Show hosted by the Gem & Mineral Society of Syracuse. New York State Fairgrounds, Syracuse. AFMS meetings: July 7-8. EFMLS Annual Meeting: July 8 Show: July 9 -10.
- 16-17: Annual Show sponsored by the Saco Valley Gem & Mineral Club. Conway Middle School Gymnasium, Conway, NH.
- 30-31: 32<sup>nd</sup> Annual Champlain Valley Gem, Mineral & Fossil Show sponsored by the Burlington Gem & Mineral Club. Tuttle Middle School, So. Burlington, VT.

**August:**

- 6-7: 41<sup>st</sup> Annual Mid-State Gem & Mineral Show sponsored by the Water-Oak Gem & Mineral Society. Mt. Merici School, 152 Western Ave; Waterville, ME.
- 19-21 Gem Miners Juilee, Mid Atlantic Gem and Mineral Association, Lebanon Expo Center, Route 72 and Rocherty Road. Friday 10:00 AM to 6:00 PM, Saturday 10:00 AM to 6:00 PM, Sunday 10:00 AM to 4:00 PM. For information call 301-565-0487.
- 27-28: 45<sup>th</sup> Annual Rock & Mineral Show sponsored by the St. Lawrence County Rock & Mineral Club. Madrid Community Park, Madrid, NY
- 27-28: 48<sup>th</sup> Annual Gem & Mineral Festival sponsored by the Capital Mineral Club. Everett Arena, Concord, NH

**September:**

- 10 – 12: 48<sup>th</sup> Annual Gem, Mineral & Fossil Show sponsored by the Northern Berkshire Mineral Club. American Legion Post #90, Rte 7; Pownal, VT.
- 17 – 18: 42<sup>th</sup> Annual Mid-Hudson Show – The Fossils of New York sponsored by the Mid Hudson Valley Gem & Mineral Society. Dutchess Co. Fairgrounds, Rt. 9, Rhinebeck, NY
- 17-18: 44<sup>th</sup> Annual Gem & Mineral Show sponsored by the Central Pennsylvania Rock & Mineral Club. Zembo Shrine, 2801 N 3<sup>rd</sup> St; Harrisburg, PA.
- 24-25: 47<sup>th</sup> Annual Atlantic Coast Gem, Mineral & Jewelry Show hosted by the Gem Cutters Guild of Baltimore, Howard County Fairgrounds, I-70 at MD Rt 32; West Friendship, MD
- Sept 30 – Oct 2: Desautels Micromount Symposium hosted by the Baltimore Mineral Society. MHA Conference Center, Elkridge MD.

**October:**

- 15-16: 38<sup>th</sup> Annual Gem, Mineral, Fossil & Jewelry Show & Sale sponsored by the Kanawha Rock & Gem Club. So. Charleston Community Center, So. Charleston, WV.
- 22 – 23: 42<sup>th</sup> Annual Rochester Gem, Mineral, Jewelry & Fossil Show sponsored by the Rochester Academy of Science Mineral Section and Rochester Lapidary Society. Monroe Co. Fair & Expo Center, Henrietta, NY.
- 29: Annual "Ultraviolation" Fluorescent Mineral Show sponsored by the Rock & Mineral Club of Lower Bucks County. First United Methodist Church, 840 Trenton Road, Fairless Hills, PA.

**November:**

- 5 - 6: 7<sup>th</sup> Annual Rock & Gem Show sponsored by the Penobscot Mineral & Lapidary Club. Brewer Auditorium, Brewer, ME.
- 19-20: 45<sup>th</sup> Annual Gem, Mineral, Jewelry, Bead & Fossil Show sponsored by the Gem &

Mineral Society of the Palm Beaches. So. Florida Fairgrounds Expo Center East; West Palm Beach, FL.

25-27: 32<sup>nd</sup> Annual Roanoke Valley Mineral & Gem Show sponsored by the Roanoke Valley Mineral & Gem Society. Salem Civic Center, 1001 Roanoke Blvd; Salem, VA.

STILL WAITING..... (Re pg 2 )

As you can see we have some pics and an article this month!!!!

THANKS

Back to my vacation.



**DVESS MEETING LOCATION : DIRECTIONS:**

From Atco (west-bound), after the traffic light at Taunton Ave. (Rite Aid drugstore on the left), the church is about the

3rd building on the right; turn into the first driveway. If you miss it, pass by the church and turn Right onto Broad St. (at

the Berlin Diner) then turn Right into the parking lot of the Baptist Church and go straight all the way - the parking lots of

both churches connect.

From Rt. 73 in Marlton: head East (South) on Rt. 73. As you enter Berlin, you will pass Wal-Mart (on the left) and a

shopping center (on the right) with Shop Rite and Staples. **Get into the Right "Exit Only" lane and follow the signs for**

**Cross Keys Rd. At the intersection of Cross Keys Rd. and the White Horse Pike (Rt. 30) turn LEFT. At the next intersection (Broad St.) continue straight past the Berlin Diner and SPEEDY MART on your left; pass by 2 or 3 white storefronts on the left then see the big white church with red front doors on your left. Pass in front of the church and turn into the driveway on the far side. Education Building is behind the church.**

From Lindenwold or Clementon on the White Horse Pike (east-bound):

As you enter Berlin business district, you will pass through the traffic light at Cross Keys Rd. (CVS Pharmacy on right corner). Follow highlighted directions above.

**MEMBERSHIP INFORMATION**

Regular members are entitled to participate in all DVESS activities. Sponsoring members are entitled to the same plus a specially chosen mineral specimen. Dues are renewable each year in January. Membership rates for the Society:

Regular Membership:

\$15.00 for the 1<sup>st</sup> family member + \$5.00 for each additional family member

\$10.00 for the 1<sup>st</sup> Senior ( 65+ ) member + \$5.00 for each additional family member

Sponsoring Memberships ( each additional family member - \$5.00 ):

"Silver" \$50.00 for 1<sup>st</sup> family member - receive a Geode Specimen

"Gold" \$75.00 for 1<sup>st</sup> family member - receive a Native Gold Specimen

"Platinum" \$100 for 1<sup>st</sup> family member - receive a Premium Specimen

**SOCIETY INFORMATION**

The Delaware Valley Earth Science Society, Inc., ( DVESS ), a non-profit organization, was founded in 1956 and incorporated in the state of New Jersey in 1957.

The Society:

- \* promotes interest , knowledge and the development of skills in the "earth sciences". These interests include mineralogy, paleontology, lapidary arts, archeology and local preservation.
- \* supports the conservation of natural resources, advocates the availability of collecting sites and maintains close contact with those in the academic field.
- \* is a member club of the Eastern Federation of Mineralogical and Lapidary Societies ( <http://www.AmFed.org/EFMLS> )

**MEETINGS**

The Society meets the 2<sup>nd</sup> Wednesday of each month throughout the year at Centenary United Methodist Church, 151 South White Horse Pike, (route 30) in Berlin. Junior Rockhounds meet at 7:30pm with the regular meeting beginning around 8 pm.

Anyone with info for the newsletter please share with me. You can be published!

Stuff you did in school, on a trip etc., see my info below ( next page ).

Editor's Notes: Editor is not responsible for authenticity of information in any articles submitted for publication. Nor are the opinions expressed in the "DVESScapades" necessarily those of the officers of the Delaware Valley Earth Science Society, Inc., and/or the editor.

**AFMS CODE OF ETHICS (American Federation of Mineralogical Societies)**

- I will respect both private and public property and will do no collecting on privately owned land without the owner's permission.
- I will keep informed on all laws, regulations of rules governing collecting on public lands and will observe them.
- I will to the best of my ability, ascertain the boundary lines of property on which I plan to collect.
- I will use no firearms or blasting material in collecting areas.
- I will cause no willful damage to property of any kind - fences, signs, buildings.
- I will leave all gates as found.
- I will build fires in designated or safe places only and will be certain they are completely extinguished before leaving the area.
- I will discard no burning material - matches, cigarettes, etc.
- I will fill all excavation holes which may be dangerous to livestock.
- I will not contaminate wells, creeks or other water supply.
- I will cause no willful damage to collecting material and will take home only what I can reasonably use.
- I will practice conservation and undertake to utilize fully and well the materials I have collected and will recycle my surplus for the pleasure and benefit of others.
- I will support the rockhound project H.E.L.P. (Help Eliminate Litter Please) and will leave all collecting areas devoid of litter, regardless of how found.
- I will cooperate with field trip leaders and those in designated authority in all collecting areas.
- I will report to my club or Federation officers, Bureau of Land management or other authorities, any deposit of petrified wood or other materials on public lands which should be protected for the enjoyment of future generations for public educational and scientific purposes.
- I will appreciate and protect our heritage of natural resources.
- I will observe the "Golden Rule", will use "Good Outdoor Manners" and will at all times conduct myself in a manner which will add to the stature and Public "image" of rockhounds everywhere.

<i>DVESS Directory 2008</i>		President <a href="mailto:terry@terryfic.com">terry@terryfic.com</a>	Terry Wilson or <a href="mailto:terry@dvess.org">terry@dvess.org</a>
1 <sup>st</sup> Vice President 856-783-0969	Ann Lynne Benson <a href="mailto:SeleniteQueen@gmail.com">SeleniteQueen@gmail.com</a>	2 <sup>nd</sup> Vice President	
Jr. Rockhound Coordinator 856-783-0969	Mel LeCompte <a href="mailto:works-in-faith@comcast.net">works-in-faith@comcast.net</a>	Recording Secretary 856-728-1731	Grant Elliott <a href="mailto:gle@verizon.net">gle@verizon.net</a>
Website Coordinator 609-714-1309	Terry Wilson <a href="mailto:terry@dvess.org">terry@dvess.org</a>	Special Events Coordinator 856-783-0969	Ann Lynne Benson <a href="mailto:SeleniteQueen@gmail.com">SeleniteQueen@gmail.com</a>
Treasurer and Program Chair Gary Weinstein 856-795-5077 - wk	856-234-0708 - home <a href="mailto:garyskyrock@hotmail.com">garyskyrock@hotmail.com</a>	DVESS Newsletter Editor, Membership Chair Carol De Cuzzi 856-428-0621 - home <a href="mailto:decuzzic@comcast.net">decuzzic@comcast.net</a> or <a href="mailto:DVESS@int-pro.com">DVESS@int-pro.com</a>	

**Membership Form**

start w/ first family member (designated as head of family) Juniors must have an adult head of family with the Junior as the additional family member for insurance purposes.

First Name: \_\_\_\_\_ Last Name: \_\_\_\_\_  
 Address: \_\_\_\_\_ City: \_\_\_\_\_  
 State: \_\_\_\_\_ ZIP+4 \_\_\_\_\_  
 Phone: \_\_\_\_\_ Email: \_\_\_\_\_  
 Cell Phone: \_\_\_\_\_ Profession, School or Major Work \_\_\_\_\_

Okay to let other members of the Club see your email and other orange-starred information (on website)?

Okay to share \_\_\_\_\_  
 Do NOT share \_\_\_\_\_

Newsletter Delivery **ONLY** via e-mail

additional family members to be registered w/ above member

Type of membership Regular Membership:  
 \$15.00 for the 1<sup>st</sup> family member + \$5.00 for each additional family member  
 \$10.00 for the 1<sup>st</sup> Senior ( 65+ ) member + \$5.00 for each additional family member  
 Dues are collected on a calendar year Jan to Dec, no pro-rata rates  
 additional members on another paper if needed

First Name: \_\_\_\_\_  
 Last Name (only if different from above) \_\_\_\_\_  
 \_\_\_\_\_  
 First Name: \_\_\_\_\_  
 Last Name (only if different from above) \_\_\_\_\_  
 \_\_\_\_\_  
 First Name: \_\_\_\_\_  
 Last Name (only if different from above) \_\_\_\_\_  
 \_\_\_\_\_

Sponsoring Memberships ( each additional family member - \$5.00 ):  
 "Silver" \$50.00 for 1<sup>st</sup> family member - receive a Geode Specimen  
 "Gold" \$75.00 for 1<sup>st</sup> family member - receive a Native Gold Specimen  
 "Platinum" \$100 for 1<sup>st</sup> family member - receive a Premium Specimen

Interests: Minerals \_\_\_ Fossils \_\_\_ Lapidary \_\_\_ Collecting \_\_\_ Museum Trips \_\_\_  
 Trotter \_\_\_ Sterling Hill \_\_\_ other, please list \_\_\_\_\_

How did you learn of DVESS? \_\_\_\_\_

Comments \_\_\_\_\_

What NON-DVESS interests or hobbies do you have? Would you be willing to share with our members?  
 \_\_\_\_\_

What would you like the club to do or provide for you? \_\_\_\_\_

**Delaware Valley Earth Science Society, Inc. ( DVESS )**  
**P.O. Box 372**  
**Maple Shade, N.J. 08052**  
**DVESS Website : <http://www.dvess.org>**

**RETURN SERVICE REQUESTED**



04/14/10

D V E S S

W O R D P U Z Z L E

# 25

b y E d L o v e l a n d

W	O	I	R	E	T	L	A	S	I	E	S	U	R	D		
H	H	A	E	U	E	N	S	Z	A	X	Y	N	O	L		
E	F	M	T	T	N	R	E	N	A	X	I	U	A	I		
L	O	N	I	I	P	O	M	O	P	E	P	F	F	R		
M	M	A	Y	L	M	K	R	E	B	I	T	O	E	J	P	
E	A	J	E	A	A	T	E	E	C	I	C	T	T	N	Q	
T	R	D	S	T	R	G	L	C	H	T	I	E	O	S	D	
N	C	E	M	E	T	T	F	P	A	N	O	R	P	W	O	
E	A	P	I	D	T	Y	R	H	O	V	I	L	J	S	P	
C	S	O	K	A	O	O	E	D	Z	L	O	T	I	S	Y	
S	I	S	R	A	A	M	D	O	G	R	S	R	N	E	T	C
E	T	I	S	O	R	H	C	O	D	O	H	R	R	F	E	
D	E	T	R	O	R	T	H	O	C	L	A	S	E	C	L	
I	T	Y	N	E	T	I	R	U	P	R	U	P	Y	U	E	
R	P	A	L	L	A	S	I	T	E	T	E	C	A	F	P	
I	X	I	I	A	S	D	S	B	D	E	X	I	L	J	D	

ALTER ORE ZINC

DEPOSIT ORTHOCLASE

DRUSE PALLASITE

FACET PECTOLITE

HELMET PELECYPOD

IRIDESCENT PREHNITE

IRON PURPURITE

KIMSEYITE PYROMORPHITE

LAYER PYROPE

MARCASITE RATTLERBOX

MOTTRAMITE RHODOCHROSITE

MUSCOVITE RHODONITE

NOVACEKITE RUTILATED

OCTAHEDRON SPECIMEN

ONYX TOPAZ

OPAL TRONA